



STOCK LIST & BUYER'S GUIDE

STEEL • PIPE • ALUMINUM • SHAPES • ORNAMENTAL



WE PROVIDE SOLUTIONS TO THE NEEDS OF OUR CUSTOMERS

STEEL • ALUMINUM • STRUCTURAL • STAINLESS • PIPE • ORNAMENTAL • PIPE ROLLING
BENDING • CUTTING TO LENGTH • PRECISION PLATE SAWING • SHAPE CUTTING & BURNING • PUNCHING • SAWING



ONTARIO • SAN BERNARDINO • IRWINDALE • PALMDALE • HESPERIA • BURBANK
800.792.9762 • WWW.PATTONSCORP.COM

A LITTLE PIECE OF THE PATTON'S STEEL HISTORY

For over six decades, Patton's has grown and evolved in the Southern California market emerging as the leader in the steel service center industry.

Our family goes back 5 generations in the steel industry, with humble beginnings in San Bernardino with a scrap business, then morphing into Alex Novack & Sons, and finally onto our founder Bud Novack with the creation of Patton Sales Corporation in 1959.

Our multigenerational business is still family owned & operated with seven Southern California locations including Ontario, San Bernardino, Palmdale, Hesperia, Compton, Irwindale & Burbank. Currently, we have our 65,000 square foot Distribution Center & Corporate Offices in Ontario.

See how Patton's has the selection, availability, strength & reliability when and where you need it!

STEEL • PIPE • ALUMINUM • SHAPES • STRUCTURAL • ORNAMENTAL

COMMON DECIMAL EQUIVALENTS

1/64" = .0156	3/8" = .375
1/32" = .0312	7/16" = .4375
1/16" = .0625	1/2" = .500
3/32" = .0937	9/16" = .5625
1/8" = .125	5/8" = .625
3/16" = .1875	11/16" = .6875
7/32" = .2187	3/4" = .750
1/4" = .250	13/16" = .8125
9/32" = .2812	7/8" = .875
5/16" = .3125	15/16" = .9375

HELPFUL HINTS FROM PATTONS

TUBING (ROUND, SQUARE OR RECTANGULAR) IS MEASURED FROM THE OUTER DIAMETER OR SIDE OF MATERIAL

PIPE (STANDARD, GALVANIZED OR ALUMINUM) IS MEASURED FROM THE INNER DIAMETER

ORNAMENTAL TUBING IS TYPICALLY TUBING WITH .049 OR .060 WALL THICKNESS

STRUCTURAL BEAMS ARE MEASURED BY THEIR DEPTH (TOP TO BOTTOM HEIGHT) AND WEIGHT PER FOOT
(I.E., W8X15 IS AN 8" BEAM THAT WEIGHS 15 POUNDS PER FOOT)

STRUCTURAL CHANNEL IS MEASURED BY THEIR DEPTH (TOP TO BOTTOM HEIGHT) AND THE WEIGHT PER FOOT
(I.E., C3X4.1 IS A 3" CHANNEL THAT WEIGHS 4.1 POUNDS PER FOOT)

STEEL SHEETS

GALVANIZED SHEETS

GAUGE	THICKNESS TOLERANCE	WEIGHT/ SQ FOOT	THICKNESS/ TOLERANCE	WEIGHT/ SQ FOOT
10	.1425 .1265	5.625	.1472 .1292	5.781
11	.1276 .1116	5.000	.1323 .1143	5.156
12	.1126 .0966	4.375	.1323 .1143	4.531
13	.0967 .0827	3.750	.1174 .0994	3.906
14	.0817 .0677	3.125	.1014 .0854	3.281
16	.0658 .0538	2.500	.0865 .0705	2.656
18	.0528 .0428	2.000	.0566 .0466	2.156
20	.0389 .0329	1.500	.0436 .0356	1.656
22	.0329 .0269	1.250	.0376 .0296	1.406
24	.0269 .0209	1.000	.0316 .0236	1.156
26	.0199 .0159	0.750	.0247 .0187	0.906
28	.0169 .0129	0.625	.0217 .0157	0.781

PATTON'S SERVICES INCLUDE

24-HOUR COMPLETE IN-HOUSE PROCESSING

LASER TUBE CUTTING • BANDSAW CUTTING • IRONWORKING
FLAMECUTTING • PLASMA CUTTING • BURNING
BENDING • BREAKING • CUTTING TO LENGTH
PUNCHING • SAWING • SHAPE CUTTING • SHEARING

WITH OVER 65 YEARS OF PROCESSING EXPERIENCE, PATTON'S
OFFERS HIGH- QUALITY SERVICES OPERATING NUMEROUS TYPES OF
METAL-SHAPING EQUIPMENT DESIGNED TO MEET THE MOST
STRINGENT REQUIREMENTS OF OUR CUSTOMERS

TABLE OF CONTENTS

SECTION I

CARBON STEEL, GALVANIZED, GRATING & GRIP STRUT, EXPANDED & PERFORATED SHEET, AND PRE-CUT MATERIALS	5
TUBING	
SQUARE TUBE	6 - 8
RECTANGULAR TUBE	9 - 12
ROUND TUBE	13 - 14
PIPE	15
ANGLE	
EQUAL LEGS	16 - 17
UNEQUAL LEGS	18 - 19
CHANNEL	20
JUNIOR & MISCELLANEOUS CHANNEL	21
BEAM	
WIDE FLANGE BEAM	22 - 24
STANDARD BEAM	25
JUNIOR & MISCELLANEOUS BEAM	26
SHAPES	
FLAT BAR	27 - 30
SQUARE & ROUND BAR	31
SHEET & PLATE	
HOT ROLL SHEET	32
GALVANIZED SHEET	33
COLD ROLL SHEET	34
A-36 HOT ROLL PLATE	35 - 36
DIAMOND PLATE	37
GRATING & GRIP STRUT	38
EXPANDED & PERFORATED SHEET	39
WIRE MESH & CORRUGATED SHEET	40
PANELS, DECKING, PURLINS & MORE	41
PRE-CUT PLATE & SHEET AND BASE PLATES	42

SECTION II

ALUMINUM, COLD ROLL, STAINLESS STEEL, D.O.M & CHROMOLY TUBING	43
ALUMINUM	
5052 SHEET & PLATE	44
6061 SHEET & PLATE	45
TREAD-BRITE & 6061 DIAMOND PLATE	46
SQUARE, RECTANGULAR & ROUND TUBING	47
PIPE	48
CHANNEL	48
ANGLE	49
FLAT BAR	50 - 51
SQUARE BAR	52
ROUND BAR	52
COLD ROLL	
FLAT BAR	53 - 54
SQUARE BAR	55
ROUND BAR	56
STAINLESS	
SHEET	57
FLAT BAR	58
D.O.M & CHROMOLY TUBING	59



SECTION I

CARBON STEEL

TUBING • PIPE • ANGLE • CHANNEL
BEAM • SHAPES • HOT ROLL & COLD ROLL SHEET • PLATE

GALVANIZED

SHEET

GRATING & GRIP STRUT

EXPANDED & PERFORATED

SHEET

PRE-CUT SHEET & PLATE

SQUARE TUBING



ASTM A-500 • A-36 SQUARE TUBE

DIMENSIONS				WALL THICKNESS	LBS/FOOT
1/2	X	1/2	X	.049	.3005
			X	.060	.3845
5/8	X	5/8	X	.049	.3838
			X	.060	.4950
3/4	X	3/4	X	.049	.4671
			X	.060	.6055
			X	.083	.7530
			X	.090	.8563
			X	.120	1.020
7/8	X	7/8	X	.049	.5504
			X	.060	.7160
1	X	1	X	.049	.6337
			X	.060	.8270
			X	.075	.9090
			X	.083	1.035
			X	.090	1.169
			X	.120	1.436
1-1/4	X	1-1/4	X	.049	.8000
			X	.060	1.047
			X	.075	1.110
			X	.083	1.317
			X	.090	1.443
			X	.120	1.844
			X	.188	2.610
1-1/2	X	1-1/2	X	.049	.9670
			X	.060	1.268
			X	.075	1.350
			X	.083	1.600
			X	.090	1.815
			X	.120	2.252
			X	.188	3.350
			X	.250	4.250

PATTON'S TYPICALLY STOCKS 20' & 24' LENGTHS OF TUBE, WHICH ARE INDUSTRY STANDARD LENGTHS
 WEIGHT PER FOOT CAN RANGE, DEPENDING ON MILL SPECS AND/OR STANDARDS
 PLEASE LET US KNOW IF YOU NEED A SIZE OTHER THAN LISTED ABOVE

SQUARE TUBING



ASTM A-500 • A-36 SQUARE TUBE

DIMENSIONS				WALL THICKNESS	LBS/FOOT
1-3/4	X	1-3/4	X	.060	1.490
			X	.090	2.138
			X	.120	2.660
2	X	2	X	.060	1.710
			X	.075	1.850
			X	.083	2.164
			X	.090	2.316
			X	.120	3.068
			X	.188	4.432
			X	.250	5.410
2-1/2	X	2-1/2	X	.120	3.910
			X	.188	5.610
			X	.250	7.110
3	X	3	X	.060	2.594
			X	.083	3.292
			X	.090	3.753
			X	.120	4.700
			X	.188	6.870
			X	.250	8.810
3-1/2	X	3-1/2	X	.120	5.516
			X	.188	8.150
			X	.250	10.510
4	X	4	X	.083	4.422
			X	.120	6.330
			X	.188	9.450
			X	.250	12.150
			X	.375	17.270
			X	.500	21.630
			4-1/2	X	4-1/2
X	.250	13.910			

PATTON'S TYPICALLY STOCKS 20' & 24' LENGTHS OF TUBE, WHICH ARE INDUSTRY STANDARD LENGTHS
 WEIGHT PER FOOT CAN RANGE, DEPENDING ON MILL SPECS AND/OR STANDARDS
 PLEASE LET US KNOW IF YOU NEED A SIZE OTHER THAN LISTED ABOVE

PRODUCTS ARE SUBJECT TO AVAILABILITY OR SPECIAL ORDERING

SQUARE TUBING



ASTM A-500 • A-36 SQUARE TUBING

DIMENSIONS				WALL THICKNESS	LBS/FOOT
5	X	5	X	.188	11.970
			X	.250	15.620
			X	.375	22.370
6	X	6	X	.188	14.560
			X	.250	19.020
			X	.375	27.480
			X	.500	35.240
7	X	7	X	.188	17.130
			X	.250	22.420
			X	.500	42.050
8	X	8	X	.250	25.820
			X	.500	48.850
10	X	10	X	.250	32.630
			X	.375	47.900
			X	.500	62.460
12	X	12	X	.250	39.440
			X	.375	58.100
			X	.500	76.070
14	X	14	X	.250	45.830
			X	.500	90.770
16	X	16	X	.250	52.630
			X	.500	104.030

PATTON'S TYPICALLY STOCKS 20' & 24' LENGTHS OF TUBE, WHICH ARE INDUSTRY STANDARD LENGTHS
 WEIGHT PER FOOT CAN RANGE, DEPENDING ON MILL SPECS AND/OR STANDARDS
 PLEASE LET US KNOW IF YOU NEED A SIZE OTHER THAN LISTED ABOVE

RECTANGULAR TUBING



ASTM A-500 • A36 RECTANGULAR TUBE

DIMENSIONS				WALL THICKNESS	LBS/FOOT
1/2	X	1	X	.060	.5520
1/2	X	1-1/2	X	.060	.7630
3/4	X	1-1/2	X	.060	.8790
				.075	1.087
				.120	1.640
1	X	1-1/2	X	.049	.8070
				.060	.9810
				.090	1.490
				.120	1.844
1	X	2	X	.060	1.163
				.075	1.442
				.083	1.589
				.090	1.716
				.120	2.252
1	X	3	X	.060	1.564
				.075	2.000
				.083	2.164
				.090	2.461
				.120	3.050
1	X	4	X	.060	1.964
				.120	3.884
1-1/2	X	2	X	.060	1.400
				.090	2.138
				.120	2.660
1-1/2	X	2-1/2	X	.060	1.564
				.083	2.164
				.120	3.068
				.188	4.490

PATTON'S TYPICALLY STOCKS 20' & 24' LENGTHS OF TUBE, WHICH ARE INDUSTRY STANDARD LENGTHS
 WEIGHT PER FOOT CAN RANGE, DEPENDING ON MILL SPECS AND/OR STANDARDS
 PLEASE LET US KNOW IF YOU NEED A SIZE OTHER THAN LISTED ABOVE

PRODUCTS ARE SUBJECT TO AVAILABILITY OR SPECIAL ORDERING

RECTANGULAR TUBING



ASTM A-500 • A36 RECTANGULAR TUBE

DIMENSIONS				WALL THICKNESS	LBS/FOOT
1-1/2	X	3	X	.060	1.750
				.090	2.784
				.120	3.476
				.188	5.070
1-1/2	X	4	X	.083	3.029
				.120	4.292
2	X	3	X	.060	2.150
				.090	3.107
				.120	3.760
				.188	5.590
				.250	7.110
2	X	4	X	.060	2.595
				.120	4.700
				.188	6.870
				.250	8.810
2	X	5	X	.120	5.516
				.188	8.150
				.250	10.51
				.312	12.70
2	X	6	X	.083	4.420
				.120	6.210
				.188	9.420
				.250	12.21
2	X	8	X	.188	11.97
				.250	15.62
2	X	10		.188	14.53
				.250	19.02
2-1/2	X	3-1/2		.188	6.903

PATTON'S TYPICALLY STOCKS 20' & 24' LENGTHS OF TUBE, WHICH ARE INDUSTRY STANDARD LENGTHS
 WEIGHT PER FOOT CAN RANGE, DEPENDING ON MILL SPECS AND/OR STANDARDS
 PLEASE LET US KNOW IF YOU NEED A SIZE OTHER THAN LISTED ABOVE

RECTANGULAR TUBING



ASTM A-500 • A36 RECTANGULAR TUBE

DIMENSIONS				WALL THICKNESS	LBS/FOOT
3	X	4	X	.120	5.516
				.188	8.150
				.250	10.51
				.312	12.70
3	X	5	X	.120	6.330
				.188	9.420
				.250	12.21
				.312	14.83
3	X	6	X	.120	7.148
				.188	10.70
				.250	13.91
				.375	19.82
3	X	8		.188	13.25
				.250	17.32

**AT PATTON'S... WE PROVIDE SOLUTIONS
TO THE NEEDS OF OUR CUSTOMERS**

SINCE 1959

For over six decades, Patton's Steel has grown and evolved in the Southern California market and continues to be the leader in the Steel Service Center industry. Started in 1959, continuously family owned and operated, Patton's now has SEVEN Southern California locations, with facilities in Ontario, San Bernardino, Palmdale, Hesperia, Compton, Irwindale & Burbank. Plus, Patton's has it's 65,000 square foot Distribution Center & Corporate Offices in Ontario, California.

PATTON'S TYPICALLY STOCKS 20' & 24' LENGTHS OF TUBE, WHICH ARE INDUSTRY STANDARD LENGTHS
WEIGHT PER FOOT CAN RANGE, DEPENDING ON MILL SPECS AND/OR STANDARDS
PLEASE LET US KNOW IF YOU NEED A SIZE OTHER THAN LISTED ABOVE

PRODUCTS ARE SUBJECT TO AVAILABILITY OR SPECIAL ORDERING

RECTANGULAR TUBING



ASTM A-500 • A36 RECTANGULAR TUBE

DIMENSIONS				WALL THICKNESS	LBS/FOOT
4	X	5	X	.188	10.70
				.250	13.91
4	X	6	X	.120	8.200
				.188	11.97
				.250	15.60
				.375	22.37
				.500	28.40
4	X	8	X	.188	14.53
				.250	19.02
				.375	27.48
				.500	35.24
4	X	10	X	.188	17.08
				.250	22.42
				.313	27.59
				.375	32.58
4	X	12	X	.250	25.82
				.375	37.69
5	X	10	X	.250	24.12
				.375	34.27
6	X	8	X	.250	22.42
				.375	32.58
				.500	42.05
6	X	10	X	.188	19.65
				.250	25.82
8	X	10	X	.375	42.79
				.500	55.65

PATTON'S TYPICALLY STOCKS 20' & 24' LENGTHS OF TUBE, WHICH ARE INDUSTRY STANDARD LENGTHS
 WEIGHT PER FOOT CAN RANGE, DEPENDING ON MILL SPECS AND/OR STANDARDS
 PLEASE LET US KNOW IF YOU NEED A SIZE OTHER THAN LISTED ABOVE

ROUND TUBING



ASTM A-500 • A36 ROUND TUBE

DIMENSIONS		WALL THICKNESS	LBS/FOOT
1/2"	X	.049	.2360
	X	.060	.2850
5/8"	X	.049	.3015
	X	.060	.3650
3/4"	X	.049	.3668
	X	.060	.4620
	X	.075	.5405
	X	.090	.6646
7/8"	X	.049	.4323
	X	.065	.5623
	X	.075	.6410
1"	X	.049	.4977
	X	.060	.6280
	X	.083	.8129
	X	.090	.9182
	X	.120	1.128
1-1/8"	X	.060	.7010
1-1/4"	X	.049	.6285
	X	.060	.7890
	X	.083	1.034
	X	.090	1.172
	X	.120	1.448
1-1/2"	X	.060	.9580
	X	.083	1.256
	X	.090	1.426
	X	.120	1.769
	X	.188	2.634

PATTON'S TYPICALLY STOCKS 20' & 24' LENGTHS OF TUBE, WHICH ARE INDUSTRY STANDARD LENGTHS
 WEIGHT PER FOOT CAN RANGE, DEPENDING ON MILL SPECS AND/OR STANDARDS
 PLEASE LET US KNOW IF YOU NEED A SIZE OTHER THAN LISTED ABOVE

PRODUCTS ARE SUBJECT TO AVAILABILITY OR SPECIAL ORDERING

ROUND TUBING



ASTM A-500 • A36 ROUND TUBE

DIMENSIONS		WALL THICKNESS	LBS/FOOT
1-5/8"	X	.090	1.552
1-3/4"	X	.060	1.050
	X	.090	1.600
	X	.120	2.089
2"	X	.035	0.734
	X	.049	1.021
	X	.060	1.343
	X	.090	1.933
	X	.120	2.409
2-1/8"	X	.049	1.086
2-1/4"	X	.120	2.730
2-1/2"	X	.060	1.690
	X	.120	3.050
3"	X	.060	1.975
	X	.090	2.947
	X	.120	3.691
4"	X	.120	4.973
	X	.188	9.662
5"	X	.120	6.254
	X	.188	9.662
6"	X	.120	7.536
	X	.188	11.67

PATTON'S TYPICALLY STOCKS 20' & 24' LENGTHS OF TUBE, WHICH ARE INDUSTRY STANDARD LENGTHS
 WEIGHT PER FOOT CAN RANGE, DEPENDING ON MILL SPECS AND/OR STANDARDS
 PLEASE LET US KNOW IF YOU NEED A SIZE OTHER THAN LISTED ABOVE

STEEL PIPE



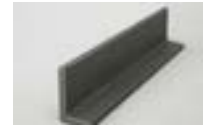
INNER DIAM.	OUTER DIAM.	SCH. 10 WALL	SCH. 40 WALL	SCH. 80 WALL	LBS/FOOT (SCH. 40)
1/8"	.405	.049	.068	.095	.2477
1/4"	.540	.065	.088	.119	.4248
3/8"	.675	.065	.091	.126	.5650
1/2"	.840	.083	.109	.147	.8510
3/4"	1.050	.083	.113	.154	1.130
1"	1.315	.109	.133	.179	1.680
1-1/4"	1.660	.109	.140	.191	2.273
1-1/2"	1.900	.109	.145	.200	2.718
2"	2.375	.109	.154	.218	3.653
2-1/2"	2.875	.120	.203	.276	5.793
3"	3.500	.120	.216	.300	7.576
3-1/2"	4.000	.120	.226	.318	9.109
4"	4.500	.120	.237	.337	10.79
5"	5.563	.134	.258	.375	14.62
6"	6.625	.134	.280	.432	18.97
8"	8.625	.148	.322	.500	28.55
10"	10.75	.165	.365	.594	40.48
12"	12.75	.180	.406	.688	53.52

**WE ALSO CARRY UNCOATED PIPE, GRADE B PIPE, & GALVANIZED PIPE.
WE CAN SPECIAL ORDER VARYING LENGTHS OF PIPE LISTED AS WELL**

PATTON'S TYPICALLY STOCKS 21' & 24' LENGTHS OF PIPE, WHICH ARE INDUSTRY STANDARD LENGTHS
WEIGHT PER FOOT CAN RANGE, DEPENDING ON MILL SPECS AND/OR STANDARDS
PLEASE LET US KNOW IF YOU NEED A SIZE OTHER THAN LISTED ABOVE

PRODUCTS ARE SUBJECT TO AVAILABILITY OR SPECIAL ORDERING

HOT ROLL ANGLE



EQUAL LEGS ANGLE

DIMENSIONS				THICKNESS	LBS PER FOOT	LBS PER LENGTH (20')
1/2	X	1/2	X	1/8	.380	7.60
3/4	X	3/4	X	1/8	.590	11.80
1	X	1	X	1/8	.800	16.00
			X	3/16	1.16	23.20
			X	1/4	1.49	29.80
1-1/4	X	1-1/4	X	1/8	1.01	20.20
			X	3/16	1.48	29.60
			X	1/4	1.92	38.40
1-1/2	X	1-1/2	X	1/8	1.23	24.60
			X	3/16	1.80	36.00
			X	1/4	2.34	46.80
			X	3/8	3.35	67.00
1-3/4	X	1-3/4	X	1/8	1.44	28.80
			X	3/16	2.12	42.40
			X	1/4	2.77	55.40
2	X	2	X	1/8	1.65	33.00
			X	3/16	2.44	48.80
			X	1/4	3.19	63.80
			X	3/8	4.70	94.00
2-1/2	X	2-1/2	X	3/16	3.07	61.40
			X	1/4	4.10	82.00
			X	3/8	5.90	118.0
			X	1/2	7.70	154.0
3	X	3	X	3/16	3.71	74.20
			X	1/4	4.90	98.00
			X	5/16	6.10	122.0
			X	3/8	7.20	144.0
			X	1/2	9.40	188.0

PATTON'S TYPICALLY STOCKS 20' & 24' LENGTHS OF ANGLE, WHICH ARE INDUSTRY STANDARD LENGTHS
 WEIGHT PER FOOT CAN RANGE, DEPENDING ON MILL SPECS AND/OR STANDARDS
 PLEASE LET US KNOW IF YOU NEED A SIZE OTHER THAN LISTED ABOVE

HOT ROLL ANGLE



EQUAL LEGS ANGLE

DIMENSIONS				THICKNESS	LBS PER FOOT	LBS PER LENGTH (20')
3-1/2	X	3-1/2	X	1/4	5.80	116.0
			X	3/8	8.50	170.0
			X	1/2	11.1	222.0
4	X	4	X	1/4	6.60	132.0
			X	5/16	8.20	164.0
			X	3/8	9.80	196.0
			X	1/2	12.8	256.0
			X	5/8	15.7	314.0
			X	3/4	18.5	370.0
5	X	5	X	5/16	10.3	206.0
			X	3/8	12.3	246.0
			X	1/2	16.2	324.0
			X	5/8	20.0	400.0
			X	3/4	23.6	472.0
6	X	6	X	5/16	12.4	248.0
			X	3/8	14.9	298.0
			X	1/2	19.6	392.0
			X	5/8	24.2	484.0
			X	3/4	28.7	574.0
			X	1	37.4	748.0
8	X	8	X	1/2	26.4	528.0
			X	5/8	32.7	654.0
			X	3/4	38.9	778.0
			X	1	51.0	1020.0

PATTON'S TYPICALLY STOCKS 20' & 24' LENGTHS OF ANGLE, WHICH ARE INDUSTRY STANDARD LENGTHS
 WEIGHT PER FOOT CAN RANGE, DEPENDING ON MILL SPECS AND/OR STANDARDS
 PLEASE LET US KNOW IF YOU NEED A SIZE OTHER THAN LISTED ABOVE

PRODUCTS ARE SUBJECT TO AVAILABILITY OR SPECIAL ORDERING

HOT ROLL ANGLE



UNEQUAL LEGS ANGLE

DIMENSIONS				THICKNESS	LBS PER FOOT	LBS PER LENGTH (20')
2	X	1-1/2	X	1/8	1.44	28.80
2	X	1-1/2	X	3/16	2.12	42.40
2	X	1-1/2	X	1/4	2.77	55.40
2-1/2	X	1-1/2	X	3/16	2.44	48.80
2-1/2	X	1-1/2	X	1/4	3.19	63.80
2-1/2	X	2	X	3/16	2.75	55.00
2-1/2	X	2	X	1/4	3.62	72.40
2-1/2	X	2	X	3/8	5.30	106.00
3	X	2	X	3/16	3.07	61.40
3	X	2	X	1/4	4.10	82.00
3	X	2	X	3/8	5.90	118.00
3	X	2	X	1/2	7.70	154.00
3	X	2-1/2	X	3/16	3.39	67.80
3	X	2-1/2	X	1/4	4.50	90.00
3	X	2-1/2	X	3/8	6.60	132.00
3	X	2-1/2	X	1/2	8.50	170.00
3-1/2	X	2-1/2	X	1/4	4.90	98.00
3-1/2	X	2-1/2	X	3/8	7.20	144.00
3-1/2	X	2-1/2	X	1/2	9.40	188.00
3-1/2	X	3	X	1/4	5.40	108.00
3-1/2	X	3	X	3/8	7.90	158.00
3-1/2	X	3	X	1/2	10.20	204.00
4	X	3	X	1/4	5.80	116.00
4	X	3	X	3/8	8.50	170.00
4	X	3	X	1/2	11.10	222.00
4	X	3-1/2	X	1/4	6.20	124.00
4	X	3-1/2	X	1/2	11.90	238.00

PATTON'S TYPICALLY STOCKS 20' & 24' LENGTHS OF ANGLE, WHICH ARE INDUSTRY STANDARD LENGTHS
 WEIGHT PER FOOT CAN RANGE, DEPENDING ON MILL SPECS AND/OR STANDARDS
 PLEASE LET US KNOW IF YOU NEED A SIZE OTHER THAN LISTED ABOVE

PRODUCTS ARE SUBJECT TO AVAILABILITY OR SPECIAL ORDERING

HOT ROLL ANGLE



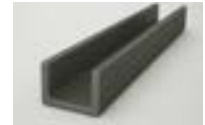
UNEQUAL LEGS ANGLE

DIMENSIONS				THICKNESS	LBS PER FOOT	LBS PER LENGTH (20')
5	X	3	X	1/4	6.60	132.00
5	X	3	X	3/8	9.80	196.00
5	X	3	X	1/2	12.80	256.00
5	X	3-1/2	X	1/4	7.00	140.00
5	X	3-1/2	X	3/8	10.40	208.00
5	X	3-1/2	X	1/2	13.60	272.00
6	X	3-1/2	X	1/4	7.90	158.00
6	X	3-1/2	X	5/16	9.80	196.00
6	X	3-1/2	X	3/8	11.70	234.00
6	X	3-1/2	X	1/2	15.30	306.00
6	X	4	X	5/16	10.30	206.00
6	X	4	X	3/8	12.30	246.00
6	X	4	X	1/2	16.20	324.00
6	X	4	X	5/8	20.00	400.00
6	X	4	X	3/4	23.60	472.00
6	X	4	X	1	30.60	612.00
7	X	4	X	3/8	13.60	272.00
7	X	4	X	1/2	17.90	358.00
7	X	4	X	5/8	22.10	442.00
7	X	4	X	3/4	26.20	524.00
8	X	4	X	1/2	19.60	392.00
8	X	4	X	5/8	24.20	484.00
8	X	4	X	3/4	28.70	574.00
8	X	4	X	1	37.40	748.00
8	X	6	X	1/2	23.00	460.00
8	X	6	X	5/8	28.50	570.00
8	X	6	X	3/4	33.80	676.00
8	X	6	X	7/8	39.10	782.00
8	X	6	X	1	44.20	884.00
9	X	4	X	1/2	21.30	426.00
9	X	4	X	5/8	26.30	526.00

PATTON'S TYPICALLY STOCKS 20' & 24' LENGTHS OF ANGLE, WHICH ARE INDUSTRY STANDARD LENGTHS
 WEIGHT PER FOOT CAN RANGE, DEPENDING ON MILL SPECS AND/OR STANDARDS
 PLEASE LET US KNOW IF YOU NEED A SIZE OTHER THAN LISTED ABOVE

PRODUCTS ARE SUBJECT TO AVAILABILITY OR SPECIAL ORDERING

CHANNEL



BAR CHANNEL

1 X 1/2 X 1/8	0.84 LB/FOOT	2 X 9/16 X 3/16	1.86 LB/FOOT
1-1/2 X 1-1/2 X 1/8	1.12 LB/FOOT	2 X 1 X 1/8	1.78 LB/FOOT
1-1/2 X 3/4 X 1/8	1.17 LB/FOOT	2 X 1 X 3/16	2.57 LB/FOOT

STRUCTURAL CHANNEL



SIZE IN INCHES	LBS PER FOOT	A DEPTH IN INCHES	B FLANGE WIDTH	C WEB THICKNESS
3	X	4.1	3	0.170
	X	5.0	3	0.258
	X	6.0	3	0.356
4	X	5.4	4	0.184
	X	6.25	4	0.247
	X	7.25	4	0.321
5	X	6.7	5	0.190
	X	9.0	5	0.325
6	X	8.2	6	0.200
	X	10.5	6	0.314
	X	13	6	0.437
7	X	9.8	7	0.210
8	X	11.5	8	0.220
	X	13.75	8	0.303
9	X	13.4	9	0.233
10	X	15.3	10	0.240
	X	20.0	10	0.379
	X	25.0	10	0.526
12	X	20.7	12	0.282
	X	25.0	12	0.387

PATTON'S TYPICALLY STOCKS 20' LENGTHS OF CHANNEL, WHICH ARE INDUSTRY STANDARD LENGTHS
 WEB THICKNESS CAN RANGE, DEPENDING ON MILL SPECS AND/OR STANDARDS
 PLEASE LET US KNOW IF YOU NEED A SIZE OTHER THAN LISTED ABOVE

PRODUCTS ARE SUBJECT TO AVAILABILITY OR SPECIAL ORDERING

JR. & MISC. CHANNEL



MISCELLANEOUS CHANNEL



SIZE IN INCHES		LBS PER FOOT	A DEPTH IN INCHES	B FLANGE WIDTH	C WEB THICKNESS
JUNIOR CHANNEL					
MC 3	X	7.1	3	1.938	0.312
MC 4	X	13.8	4	2.500	0.500
MC 6	X	12	6	2.497	0.310
	X	15.3	6	3.500	0.340
MC 8	X	8.5	8	1.875	0.188
	X	18.7	8	2.978	0.353
	X	20	8	3.025	0.400
MC 10	X	6.5	10	1.125	0.150
	X	8.4	10	1.500	0.170
MC 12	X	10.6	12	1.500	0.190
MISCELLANEOUS CHANNEL					
MC 6	X	15.3	6	3.500	0.340
	X	16.3	6	3.000	0.375
MC 8	X	20.0	8	3.025	0.400
	X	21.4	8	3.450	0.375
	X	22.8	8	3.502	0.427
MC 10	X	22.0	10	3.376	0.312
	X	28.5	10	3.950	0.425
MC 12	X	14.3	12	2.120	0.250
	X	35.0	12	3.767	0.467
MC 13	X	31.8	13	4.000	0.375
MC 18	X	42.7	18	3.950	0.450
	X	58.0	18	4.200	0.700

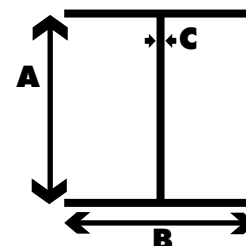
PATTON'S TYPICALLY STOCKS 20' LENGTHS OF CHANNEL, WHICH ARE INDUSTRY STANDARD LENGTHS
 WEB THICKNESS CAN RANGE, DEPENDING ON MILL SPECS AND/OR STANDARDS
 PLEASE LET US KNOW IF YOU NEED A SIZE OTHER THAN LISTED ABOVE

PRODUCTS ARE SUBJECT TO AVAILABILITY OR SPECIAL ORDERING

WIDE FLANGE BEAM



SIZE IN INCHES	LBS PER FOOT	A DEPTH IN INCHES	B FLANGE WIDTH	C WEB THICKNESS
W4 X	13	4.16	4.060	.280
W5 X	16	5.01	5.000	.240
	19	5.15	5.030	.270
W6 X	9	5.90	3.940	.170
	12	6.03	4.000	.230
	15	5.99	5.990	.230
	16	6.28	4.030	.260
	20	6.20	6.020	.260
	25	6.38	6.080	.320
W8 X	10	7.89	3.940	.170
	13	7.99	4.000	.230
	15	8.11	4.015	.245
	18	8.14	5.250	.230
	21	8.28	5.270	.250
	24	7.93	6.495	.245
	28	8.06	6.535	.285
	31	8.00	7.995	.285
	35	8.12	8.020	.310
	40	8.25	8.070	.360
	48	8.50	8.110	.400
W10 X	12	9.87	3.960	.190
	15	9.99	4.000	.230
	17	10.11	4.010	.240
	19	10.24	4.020	.250
	22	10.17	5.750	.240
	26	10.33	5.770	.260
	30	10.47	5.810	.300
	33	9.73	7.960	.290
	39	9.92	7.985	.315
	45	10.10	8.020	.350
	49	9.98	10.00	.340
	54	10.09	10.03	.370
	60	10.22	10.08	.420
	68	10.40	10.13	.470



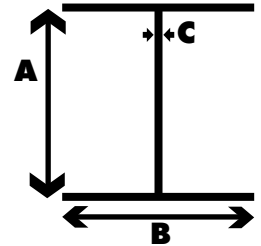
PATTON'S TYPICALLY STOCKS 20' LENGTHS OF BEAM, WHICH ARE INDUSTRY STANDARD LENGTHS
 WEB THICKNESS CAN RANGE, DEPENDING ON MILL SPECS AND/OR STANDARDS
 PLEASE LET US KNOW IF YOU NEED A SIZE OTHER THAN LISTED ABOVE

PRODUCTS ARE SUBJECT TO AVAILABILITY OR SPECIAL ORDERING

WIDE FLANGE BEAM



SIZE IN INCHES	LBS PER FOOT	A DEPTH IN INCHES	B FLANGE WIDTH	C WEB THICKNESS
W12 X 14	14	11.91	3.970	.200
W12 X 16	16	11.99	3.990	.220
W12 X 19	19	12.16	4.005	.235
W12 X 22	22	12.31	4.030	.260
W12 X 26	26	12.22	6.490	.230
W12 X 30	30	12.34	6.520	.260
W12 X 35	35	12.50	6.560	.300
W12 X 40	40	11.94	8.005	.295
W12 X 45	45	12.06	8.045	.335
W12 X 50	50	12.19	8.080	.370
W12 X 53	53	12.06	9.995	.345
W12 X 58	58	12.19	10.010	.360
W12 X 65	65	12.12	12.040	.390
W12 X 72	72	12.25	12.040	.430
W12 X 79	79	12.38	12.080	.470
W12 X 87	87	12.53	12.125	.515
W12 X 96	96	12.71	12.160	.550
W14 X 22	22	13.72	5.000	.230
W14 X 26	26	13.91	5.025	.255
W14 X 30	30	13.84	6.730	.270
W14 X 34	34	13.98	6.745	.285
W14 X 38	38	14.10	6.770	.310
W14 X 43	43	13.66	7.995	.305
W14 X 48	48	13.79	8.030	.340
W14 X 53	53	13.92	8.060	.370
W14 X 61	61	13.89	9.995	.375
W14 X 68	68	14.04	10.035	.415
W14 X 74	74	14.17	10.070	.450
W16 X 26	26	15.69	5.500	.250
W16 X 31	31	15.88	5.525	.275
W16 X 36	36	15.86	6.985	.295
W16 X 40	40	16.01	6.995	.305
W16 X 45	45	16.13	7.035	.345
W16 X 50	50	16.26	7.070	.380
W16 X 57	57	16.43	7.120	.430
W16 X 67	67	16.33	10.235	.395
W16 X 77	77	16.52	10.295	.455



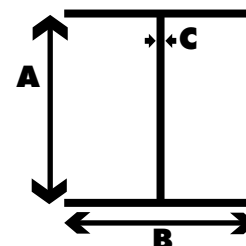
PATTON'S TYPICALLY STOCKS 20' LENGTHS OF BEAM, WHICH ARE INDUSTRY STANDARD LENGTHS
 WEB THICKNESS CAN RANGE, DEPENDING ON MILL SPECS AND/OR STANDARDS
 PLEASE LET US KNOW IF YOU NEED A SIZE OTHER THAN LISTED ABOVE

PRODUCTS ARE SUBJECT TO AVAILABILITY OR SPECIAL ORDERING

WIDE FLANGE BEAM



SIZE IN INCHES	LBS PER FOOT	A DEPTH IN INCHES	B FLANGE WIDTH	C WEB THICKNESS
W18 X 18	18	17.70	6.000	.300
W18 X 40	40	17.90	6.015	.315
W18 X 46	46	18.06	6.060	.360
W18 X 50	50	17.99	7.495	.355
W18 X 55	55	18.11	7.530	.390
W18 X 60	60	18.24	7.555	.415
W18 X 65	65	18.35	7.590	.450
W18 X 71	71	18.47	7.635	.495
W18 X 76	76	18.21	11.035	.425
W18 X 86	86	18.39	11.090	.480
W18 X 97	97	18.59	11.145	.535
W18 X 106	106	18.73	11.200	.590
W18 X 119	119	18.97	11.265	.655
W21 X 44	44	20.66	6.500	.350
W21 X 50	50	20.83	6.530	.380
W21 X 57	57	21.06	6.555	.405
W21 X 62	62	20.99	8.240	.400
W21 X 68	68	21.13	8.270	.430
W21 X 73	73	21.24	8.295	.455
W21 X 83	83	21.43	8.355	.515
W21 X 93	93	21.62	8.420	.580
W21 X 101	101	21.43	12.290	.500
W21 X 111	111	21.51	12.340	.550
W21 X 122	122	21.68	12.390	.600
W24 X 55	55	23.57	7.005	.395
W24 X 62	62	23.74	7.040	.430
W24 X 68	68	23.73	8.965	.415
W24 X 76	76	23.92	8.990	.440
W24 X 84	84	24.10	9.020	.470
W24 X 94	94	24.31	9.065	.515
W24 X 104	104	24.06	12.750	.500
W27 X 84	84	26.71	9.960	.460
W27 X 94	94	26.92	9.990	.490
W27 X 102	102	27.09	10.015	.515
W27 X 114	114	27.29	10.070	.570
W27 X 146	146	27.38	13.965	.605



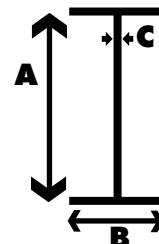
PATTON'S TYPICALLY STOCKS 20' LENGTHS OF BEAM, WHICH ARE INDUSTRY STANDARD LENGTHS
 WEB THICKNESS CAN RANGE, DEPENDING ON MILL SPECS AND/OR STANDARDS
 PLEASE LET US KNOW IF YOU NEED A SIZE OTHER THAN LISTED ABOVE

PRODUCTS ARE SUBJECT TO AVAILABILITY OR SPECIAL ORDERING

STANDARD I-BEAM



SIZE IN INCHES		LBS PER FOOT	A DEPTH IN INCHES	B FLANGE WIDTH	C WEB THICKNESS
S3	X	5.7	3	2.330	.170
	X	7.5	3	2.509	.349
S4	X	7.7	4	2.663	.193
	X	9.5	4	2.796	.326
S5	X	10.0	5	3.004	.214
	X	14.75	5	3.284	.494
S6	X	12.5	6	3.332	.232
	X	17.25	6	3.565	.465
S7	X	15.3	7	3.662	.252
	X	20.0	7	3.860	.450
S8	X	18.4	8	4.001	.271
	X	23.0	8	4.171	.441
S10	X	25.4	10	4.661	.311
	X	35.0	10	4.944	.594
S12	X	31.8	12	5.000	.350
	X	35.0	12	5.078	.428
	X	40.8	12	5.252	.462
	X	50.0	12	5.477	.687
S15	X	42.9	15	5.501	.411
	X	50.0	15	5.640	.550
S18	X	54.7	18	6.001	.461
	X	70	18	6.251	.711
S20	X	66	20	6.255	.505
S24	X	80	24	7.000	.500
	X	100	24	7.245	.745
	X	106	24	7.870	.620



PATTON'S TYPICALLY STOCKS 20' LENGTHS OF BEAM, WHICH ARE INDUSTRY STANDARD LENGTHS
 WEB THICKNESS CAN RANGE, DEPENDING ON MILL SPECS AND/OR STANDARDS
 PLEASE LET US KNOW IF YOU NEED A SIZE OTHER THAN LISTED ABOVE

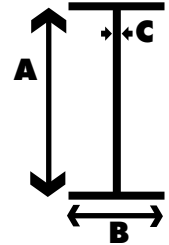
PRODUCTS ARE SUBJECT TO AVAILABILITY OR SPECIAL ORDERING

JUNIOR & MISC. BEAM



JUNIOR & MISCELLANEOUS BEAM

SIZE IN INCHES		LBS PER FOOT	A DEPTH IN INCHES	B FLANGE WIDTH	C WEB THICKNESS
M4	X	13.0	4	3.940	.254
M5	X	18.9	5	5.003	.316
M6	X	4.40	6	1.844	.114
	X	20.0	6.20	6.020	.260
M7	X	5.50	7	2.125	.125
M8	X	6.50	8	2.281	.135
M10	X	9.00	10	2.690	.155
M12	X	11.8	12	3.065	.177
M14	X	17.2	14	4.000	.188



DID YOU KNOW...

PATTON'S IS HERE FOR ALL OF YOUR METAL NEEDS!
WE STOCK THOUSANDS OF SIZES OF STEEL,
ALUMINUM, STAINLESS, & GALVANIZED PRODUCTS

PATTON'S PROCESSING INCLUDES:

PLASMA CUTTING • PLATE BURNING • BENDING • BREAKING
CUTTING TO LENGTH • PUNCHING • SHEARING

QUOTE REQUESTS ONLINE OR OVER THE PHONE!

CALL 800.792.9762 OR VISIT PATTONSCORP.COM

PATTON'S TYPICALLY STOCKS 20' LENGTHS OF BEAM, WHICH ARE INDUSTRY STANDARD LENGTHS
WEB THICKNESS CAN RANGE, DEPENDING ON MILL SPECS AND/OR STANDARDS
PLEASE LET US KNOW IF YOU NEED A SIZE OTHER THAN LISTED ABOVE

PRODUCTS ARE SUBJECT TO AVAILABILITY OR SPECIAL ORDERING

HOT ROLL FLAT BAR



1/8" FLAT BAR

DIMENSIONS			LBS/FOOT	LBS/LENGTH (20')
1/8	X	1/2	.213	4.26
1/8	X	5/8	.266	5.32
1/8	X	3/4	.319	6.38
1/8	X	1	.425	8.50
1/8	X	1-1/4	.531	10.62
1/8	X	1-1/2	.638	12.76
1/8	X	1-3/4	.744	14.88
1/8	X	2	.850	17.00
1/8	X	2-1/2	1.063	21.26
1/8	X	3	1.275	25.50
1/8	X	3-1/2	1.488	29.76
1/8	X	4	1.700	34.00
1/8	X	5	2.125	42.50
1/8	X	6	2.550	51.00
1/8	X	8	3.400	68.00
1/8	X	10	4.250	85.00
1/8	X	12	5.100	102.00

3/16" FLAT BAR

DIMENSIONS			LBS/FOOT	LBS/LENGTH (20')
3/16	X	1/2	.319	6.38
3/16	X	5/8	.398	7.96
3/16	X	3/4	.478	9.56
3/16	X	1	.638	12.76
3/16	X	1-1/4	.797	15.94
3/16	X	1-1/2	.956	19.12
3/16	X	1-3/4	1.116	22.32
3/16	X	2	1.275	25.50
3/16	X	2-1/2	1.594	31.88
3/16	X	3	1.913	38.26
3/16	X	3-1/2	2.231	44.62
3/16	X	4	2.550	51.00
3/16	X	5	3.188	63.76
3/16	X	6	3.825	76.56
3/16	X	8	4.105	102.10
3/16	X	10	6.375	127.50
3/16	X	12	7.650	153.00

PATTON'S TYPICALLY STOCKS 20' LENGTHS OF BAR, WHICH ARE INDUSTRY STANDARD LENGTHS
 WEIGHT PER FOOT CAN RANGE, DEPENDING ON MILL SPECS AND/OR STANDARDS
 PLEASE LET US KNOW IF YOU NEED A SIZE OTHER THAN LISTED ABOVE

PRODUCTS ARE SUBJECT TO AVAILABILITY OR SPECIAL ORDERING

HOT ROLL FLAT BAR



1/4" FLAT BAR

DIMENSIONS			LBS/FOOT	LBS/LENGTH (20')
1/4	X	1/2	.425	8.50
1/4	X	5/8	.531	10.62
1/4	X	3/4	.638	12.76
1/4	X	1	.850	17.00
1/4	X	1-1/4	1.063	21.26
1/4	X	1-1/2	1.275	25.50
1/4	X	1-3/4	1.488	29.76
1/4	X	2	1.700	34.00
1/4	X	2-1/2	2.125	38.26
1/4	X	3	2.550	51.00
1/4	X	3-1/2	2.975	59.50
1/4	X	4	3.400	68.00
1/4	X	5	4.250	85.00
1/4	X	6	5.100	102.00
1/4	X	7	5.956	119.12
1/4	X	8	6.800	136.00
1/4	X	10	8.500	170.00
1/4	X	12	10.200	204.00

5/16" FLAT BAR

DIMENSIONS			LBS/FOOT	LBS/LENGTH (20')
5/16	X	1	1.063	21.26
5/16	X	1-1/4	1.328	26.56
5/16	X	1-1/2	1.594	31.88
5/16	X	1-3/4	1.859	37.18
5/16	X	2	2.125	42.50
5/16	X	2-1/2	2.656	53.12
5/16	X	3	3.188	63.76
5/16	X	3-1/2	3.719	74.38
5/16	X	4	4.250	85.00
5/16	X	5	5.318	106.36
5/16	X	6	6.375	127.50

3/8" FLAT BAR

DIMENSIONS			LBS/FOOT	LBS/LENGTH (20')
3/8	X	1/2	.638	12.76
3/8	X	3/4	.956	19.12
3/8	X	1	1.275	25.50
3/8	X	1-1/4	1.594	31.88
3/8	X	1-1/2	1.913	38.26
3/8	X	1-3/4	2.231	44.62
3/8	X	2	2.550	51.00
3/8	X	2-1/2	3.188	63.76
3/8	X	3	3.825	76.50
3/8	X	3-1/2	4.463	89.76
3/8	X	4	5.100	102.00
3/8	X	5	6.375	127.50
3/8	X	6	7.650	153.00
3/8	X	8	10.200	204.00
3/8	X	10	12.760	255.20
3/8	X	12	15.300	306.00

PATTON'S TYPICALLY STOCKS 20' LENGTHS OF BAR, WHICH ARE INDUSTRY STANDARD LENGTHS
 WEIGHT PER FOOT CAN RANGE, DEPENDING ON MILL SPECS AND/OR STANDARDS
 PLEASE LET US KNOW IF YOU NEED A SIZE OTHER THAN LISTED ABOVE

PRODUCTS ARE SUBJECT TO AVAILABILITY OR SPECIAL ORDERING

HOT ROLL FLAT BAR



1/2" FLAT BAR

DIMENSIONS			LBS/FOOT	LBS/LENGTH (20')
1/2	X	3/4	1.275	25.50
1/2	X	1	1.700	34.00
1/2	X	1-1/4	2.125	42.50
1/2	X	1-1/2	2.550	51.00
1/2	X	1-3/4	2.975	59.50
1/2	X	2	3.400	68.00
1/2	X	2-1/2	4.250	85.00
1/2	X	3	5.100	102.00
1/2	X	3-1/2	5.950	119.00
1/2	X	4	6.800	136.00
1/2	X	5	8.500	170.00
1/2	X	6	10.200	204.00
1/2	X	7	11.910	238.20
1/2	X	8	13.600	272.00
1/2	X	9	15.310	306.30
1/2	X	10	17.000	340.00
1/2	X	12	20.400	408.00

5/8" FLAT BAR

DIMENSIONS			LBS/FOOT	LBS/LENGTH (20')
5/8	X	2	4.250	85.00
5/8	X	2-1/2	5.313	106.26
5/8	X	3	6.375	127.50
5/8	X	3-1/2	7.438	148.76
5/8	X	4	8.500	170.00
5/8	X	5	10.625	212.50
5/8	X	6	12.750	255.00
5/8	X	8	17.000	340.00
5/8	X	10	21.250	425.00
5/8	X	12	25.500	510.00

3/4" FLAT BAR

DIMENSIONS			LBS/FOOT	LBS/LENGTH (20')
3/4	X	1	2.550	51.00
3/4	X	1-1/4	3.188	63.76
3/4	X	1-1/2	3.825	76.50
3/4	X	1-3/4	4.463	89.26
3/4	X	2	5.100	102.00
3/4	X	2-1/2	6.375	127.50
3/4	X	3	7.650	153.00
3/4	X	3-1/2	8.925	178.50
3/4	X	4	10.200	204.00
3/4	X	5	12.750	255.00
3/4	X	6	15.300	306.00
3/4	X	8	20.400	408.00
3/4	X	10	25.500	510.00
3/4	X	12	30.600	612.00

PATTON'S TYPICALLY STOCKS 20' LENGTHS OF BAR, WHICH ARE INDUSTRY STANDARD LENGTHS
 WEIGHT PER FOOT CAN RANGE, DEPENDING ON MILL SPECS AND/OR STANDARDS
 PLEASE LET US KNOW IF YOU NEED A SIZE OTHER THAN LISTED ABOVE

PRODUCTS ARE SUBJECT TO AVAILABILITY OR SPECIAL ORDERING

HOT ROLL FLAT BAR



1" FLAT BAR

DIMENSIONS			LBS/FOOT	LBS/LENGTH (20')
1	X	1-1/2	5.100	102.00
1	X	2	6.800	136.00
1	X	2-1/2	8.500	170.00
1	X	3	10.200	204.00
1	X	4	13.610	272.30
1	X	5	17.000	340.00
1	X	6	20.400	408.00
1	X	7	23.800	476.00
1	X	8	27.200	544.00
1	X	10	34.030	680.60
1	X	12	40.840	816.80

1-1/4" FLAT BAR

DIMENSIONS			LBS/FOOT	LBS/LENGTH (20')
1-1/4	X	2	8.500	170.00
1-1/4	X	2-1/2	10.625	212.50
1-1/4	X	3	12.750	255.00
1-1/4	X	3-1/2	14.875	297.50
1-1/4	X	4	17.000	340.00

1-1/2" FLAT BAR

DIMENSIONS			LBS/FOOT	LBS/LENGTH (20')
1-1/2	X	2	10.200	204.00
1-1/2	X	2-1/2	12.750	255.00
1-1/2	X	3	15.300	306.00
1-1/2	X	4	20.400	408.00
1-1/2	X	6	30.630	612.60

2" FLAT BAR

DIMENSIONS			LBS/FOOT	LBS/LENGTH (20')
2	X	3	20.400	408.00
2	X	4	27.200	544.00
2	X	5	34.000	680.00
2	X	6	40.800	816.00
2	X	7	47.600	952.00
2	X	8	54.400	1088.00

PATTON'S TYPICALLY STOCKS 20' LENGTHS OF BAR, WHICH ARE INDUSTRY STANDARD LENGTHS
 WEIGHT PER FOOT CAN RANGE, DEPENDING ON MILL SPECS AND/OR STANDARDS
 PLEASE LET US KNOW IF YOU NEED A SIZE OTHER THAN LISTED ABOVE

PRODUCTS ARE SUBJECT TO AVAILABILITY OR SPECIAL ORDERING

HOT ROLL SQUARE BAR



ASTM A36 SQUARE BAR

DIMENSIONS	LBS/FT	LBS/LENGTH
1/4" SQUARE	.213	4.26
5/16" SQUARE	.332	6.64
3/8" SQUARE	.478	9.56
7/16" SQUARE	.651	13.02
1/2" SQUARE	.850	17.00
5/8" SQUARE	1.328	26.56
3/4" SQUARE	1.913	38.26
7/8" SQUARE	2.603	52.06
1" SQUARE	3.400	68.00
1-1/4" SQUARE	5.313	106.26
1-1/2" SQUARE	7.650	153.00
1-3/4" SQUARE	10.42	208.40
2" SQUARE	13.60	272.30

HOT ROLL ROUND BAR



ASTM A36 ROUND BAR

DIMENSIONS	LBS/FT	LBS/LENGTH
1/4" ROUND	.167	3.34
5/16" ROUND	.261	5.22
3/8" ROUND	.376	7.52
7/16" ROUND	.511	10.22
1/2" ROUND	.668	13.36
9/16" ROUND	.845	16.90
5/8" ROUND	1.043	20.86
3/4" ROUND	1.502	30.04
7/8" ROUND	2.040	40.80
1" ROUND	2.670	53.40
1-1/8" ROUND	3.380	67.60
1-1/4" ROUND	4.170	83.40
1-3/8" ROUND	5.050	101.00
1-1/2" ROUND	6.010	120.20
1-3/4" ROUND	8.180	163.60
2" ROUND	10.680	213.60

PATTON'S TYPICALLY STOCKS 20' LENGTHS OF BAR, WHICH ARE INDUSTRY STANDARD LENGTHS
 WEIGHT PER FOOT CAN RANGE, DEPENDING ON MILL SPECS AND/OR STANDARDS
 PLEASE LET US KNOW IF YOU NEED A SIZE OTHER THAN LISTED ABOVE

PRODUCTS ARE SUBJECT TO AVAILABILITY OR SPECIAL ORDERING

HOT ROLL SHEET



10 GAUGE SHEET

LENGTH		WIDTH	LBS/SQ. FOOT	TOTAL WEIGHT
48"	X	96"	5.625	180.00
	X	120"	5.625	225.00
	X	144"	5.625	270.00
60"	X	120"	5.625	281.25

11 GAUGE SHEET

LENGTH		WIDTH	LBS/SQ. FOOT	TOTAL WEIGHT
48"	X	96"	5.00	160.00
	X	120"	5.00	200.00
	X	144"	5.00	240.00
60"	X	120"	5.00	300.00

12 GAUGE SHEET

LENGTH		WIDTH	LBS/SQ. FOOT	TOTAL WEIGHT
48"	X	96"	4.375	140.00
	X	120"	4.375	175.00
	X	144"	4.375	210.00
60"	X	120"	4.375	218.80

14 GAUGE SHEET

LENGTH		WIDTH	LBS/SQ. FOOT	TOTAL WEIGHT
48"	X	96"	3.125	100.00
	X	120"	3.125	125.00
	X	144"	3.125	150.00
60"	X	120"	3.125	156.30

16 GAUGE SHEET

LENGTH		WIDTH	LBS/SQ. FOOT	TOTAL WEIGHT
48"	X	96"	2.500	80.00
	X	120"	2.500	100.00
	X	144"	2.500	120.00
60"	X	120"	2.500	150.00

WE ALSO CARRY PRE-CUTS... CHECK PAGE 40 FOR OUR SELECTION

PLEASE LET US KNOW IF YOU NEED A SIZE OTHER THAN LISTED ABOVE

PRODUCTS ARE SUBJECT TO AVAILABILITY OR SPECIAL ORDERING

GALVANIZED SHEET



10 GAUGE SHEET

LENGTH	WIDTH	LBS/SQ. FOOT	TOTAL WEIGHT
48" X	120"	5.78125	231.25

11 GAUGE SHEET

LENGTH	WIDTH	LBS/SQ. FOOT	TOTAL WEIGHT
48" X	120"	5.15625	206.25

12 GAUGE SHEET

LENGTH	WIDTH	LBS/SQ. FOOT	TOTAL WEIGHT
48" X	120"	4.53125	181.25

14 GAUGE SHEET

LENGTH	WIDTH	LBS/SQ. FOOT	TOTAL WEIGHT
48" X	120"	3.28125	131.25

16 GAUGE SHEET

LENGTH	WIDTH	LBS/SQ. FOOT	TOTAL WEIGHT
48" X	120"	2.65625	106.25

18 GAUGE SHEET

LENGTH	WIDTH	LBS/SQ. FOOT	TOTAL WEIGHT
48" X	120"	2.15625	86.25

20 GAUGE SHEET

LENGTH	WIDTH	LBS/SQ. FOOT	TOTAL WEIGHT
48" X	120"	1.62625	65.05

22 GAUGE SHEET

LENGTH	WIDTH	LBS/SQ. FOOT	TOTAL WEIGHT
48" X	120"	1.40625	56.25

24 GAUGE SHEET

LENGTH	WIDTH	LBS/SQ. FOOT	TOTAL WEIGHT
48" X	120"	1.15625	46.25

26 GAUGE SHEET

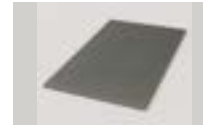
LENGTH	WIDTH	LBS/SQ. FOOT	TOTAL WEIGHT
48" X	120"	.90625	36.25

WE ALSO CARRY PRE-CUTS... CHECK PAGE 40 FOR OUR SELECTION

PLEASE LET US KNOW IF YOU NEED A SIZE OTHER THAN LISTED ABOVE

PRODUCTS ARE SUBJECT TO AVAILABILITY OR SPECIAL ORDERING

COLD ROLL SHEET



11 GAUGE SHEET

LENGTH	WIDTH	LBS/SQ. FOOT	TOTAL WEIGHT
48" X	120"	5.000	200.00

12 GAUGE SHEET

LENGTH	WIDTH	LBS/SQ. FOOT	TOTAL WEIGHT
48" X	120"	4.375	175.00

14 GAUGE SHEET

LENGTH	WIDTH	LBS/SQ. FOOT	TOTAL WEIGHT
48" X	120"	3.125	125.00

16 GAUGE SHEET

LENGTH	WIDTH	LBS/SQ. FOOT	TOTAL WEIGHT
48" X	120"	2.500	100.00

18 GAUGE SHEET

LENGTH	WIDTH	LBS/SQ. FOOT	TOTAL WEIGHT
48" X	120"	2.000	80.00

20 GAUGE SHEET

LENGTH	WIDTH	LBS/SQ. FOOT	TOTAL WEIGHT
48" X	120"	1.500	60.00

22 GAUGE SHEET

LENGTH	WIDTH	LBS/SQ. FOOT	TOTAL WEIGHT
48" X	120"	1.250	50.00

24 GAUGE SHEET

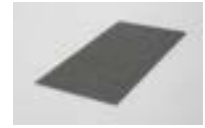
LENGTH	WIDTH	LBS/SQ. FOOT	TOTAL WEIGHT
48" X	120"	1.000	40.00

WE ALSO CARRY PRE-CUTS... CHECK PAGE 40 FOR OUR SELECTION

PLEASE LET US KNOW IF YOU NEED A SIZE OTHER THAN LISTED ABOVE

PRODUCTS ARE SUBJECT TO AVAILABILITY OR SPECIAL ORDERING

HOT ROLL PLATE



3/16" PLATE • A36

LENGTH		WIDTH	LBS/SQ. FOOT	TOTAL WEIGHT
48"	X	96"	7.66	245.10
	X	120"	7.66	306.40
	X	144"	7.66	367.70
60"	X	120"	7.66	383.00

1/4" PLATE • A36

LENGTH		WIDTH	LBS/SQ. FOOT	TOTAL WEIGHT
48"	X	96"	10.21	326.70
	X	120"	10.21	408.40
	X	144"	10.21	490.10
60"	X	120"	10.21	510.50

5/16" PLATE • A36

LENGTH		WIDTH	LBS/SQ. FOOT	TOTAL WEIGHT
48"	X	96"	12.76	408.30
	X	120"	12.76	510.40

3/8" PLATE • A36

LENGTH		WIDTH	LBS/SQ. FOOT	TOTAL WEIGHT
48"	X	96"	15.31	489.90
	X	120"	15.31	612.40
60"	X	120"	15.31	765.50

7/16" PLATE • A36

LENGTH		WIDTH	LBS/SQ. FOOT	TOTAL WEIGHT
48"	X	96"	17.87	571.80

1/2" PLATE • A36

LENGTH		WIDTH	LBS/SQ. FOOT	TOTAL WEIGHT
48"	X	96"	20.42	653.40
	X	120"	20.42	816.80
60"	X	120"	20.42	1021.00

5/8" PLATE • A36

LENGTH		WIDTH	LBS/SQ. FOOT	TOTAL WEIGHT
48"	X	96"	25.52	816.60
	X	120"	25.52	1020.80

PLEASE LET US KNOW IF YOU NEED A SIZE OTHER THAN LISTED ABOVE

PRODUCTS ARE SUBJECT TO AVAILABILITY OR SPECIAL ORDERING

HOT ROLL PLATE



3/4" PLATE

LENGTH		WIDTH	LBS/SQ. FOOT	TOTAL WEIGHT
48"	X	96"	30.63	980.20
	X	120"	30.63	1225.20

1" PLATE

LENGTH		WIDTH	LBS/SQ. FOOT	TOTAL WEIGHT
48"	X	96"	40.84	1306.90
	X	120"	40.84	1633.60

1-1/4" PLATE

LENGTH		WIDTH	LBS/SQ. FOOT	TOTAL WEIGHT
48"	X	96"	51.05	1634.00

1-1/2" PLATE

LENGTH		WIDTH	LBS/SQ. FOOT	TOTAL WEIGHT
48"	X	96"	61.26	1960.00

2" PLATE

LENGTH		WIDTH	LBS/SQ. FOOT	TOTAL WEIGHT
48"	X	96"	81.68	2614.00

PATTON'S IS YOUR ONE-STOP SHOP

We carry a wide range of grinders, power tools, ironworkers, welding supplies, abrasives, paint, ornamental supplies and much, much more. Our six retail locations are stocked with these items, plus a huge selection of steel and metal shapes available for will-call to make it easy on you to get what you need to get the job done.

**ASK YOUR SALES ASSOCIATE FOR MORE
INFORMATION AND OUR FULL SELECTION OF
TOOLS & ACCESSORIES!**

PLEASE LET US KNOW IF YOU NEED A SIZE OTHER THAN LISTED ABOVE

PRODUCTS ARE SUBJECT TO AVAILABILITY OR SPECIAL ORDERING

DIAMOND PLATE



14 GAUGE

LENGTH		WIDTH	LBS/SQ. FOOT	TOTAL WEIGHT
48"	X	96"	3.75	120.00

12 GAUGE

LENGTH		WIDTH	LBS/SQ. FOOT	TOTAL WEIGHT
48"	X	96"	5.25	168.00
	X	120"	5.25	210.00

1/8" THICK

LENGTH		WIDTH	LBS/SQ. FOOT	TOTAL WEIGHT
48"	X	96"	6.15	196.80
	X	120"	6.15	246.00
60"	X	96"	6.15	246.00
	X	120"	6.15	307.50

3/16" THICK

LENGTH		WIDTH	LBS/SQ. FOOT	TOTAL WEIGHT
48"	X	96"	8.71	278.70
	X	120"	8.71	348.40
60"	X	120"	8.71	435.50
72"	X	120"	8.71	522.60

1/4" THICK

LENGTH		WIDTH	LBS/SQ. FOOT	TOTAL WEIGHT
48"	X	96"	11.26	360.30
	X	120"	11.26	450.40
	X	144"	11.26	540.48
60"	X	120"	11.26	563.00

5/16" THICK

LENGTH		WIDTH	LBS/SQ. FOOT	TOTAL WEIGHT
48"	X	96"	13.81	441.92
	X	120"	13.81	552.40
	X	144"	13.81	662.88
60"	X	120"	13.81	690.50
	X	144"	13.81	828.60

3/8" THICK

LENGTH		WIDTH	LBS/SQ. FOOT	TOTAL WEIGHT
48"	X	96"	16.37	523.80
	X	120"	16.37	654.80
60"	X	120"	16.37	818.50

1/2" THICK

LENGTH		WIDTH	LBS/SQ. FOOT	TOTAL WEIGHT
48"	X	96"	21.47	687.00
60"	X	120"	21.47	1288.20

PLEASE LET US KNOW IF YOU NEED A SIZE OTHER THAN LISTED ABOVE

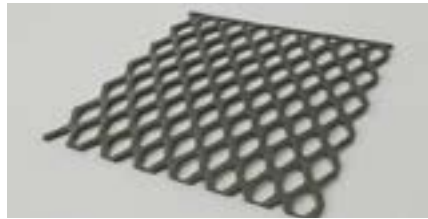
PRODUCTS ARE SUBJECT TO AVAILABILITY OR SPECIAL ORDERING

EXPANDED METAL GRATING

Expanded Metal Grating is a heavy duty expanded metal produced from carbon steel sheet and plate. It contains no joints or welds, as each sheet is a single piece of sturdy steel. Lightweight & economical, grating is the perfect material to use when you need a strong, durable, safe and lightweight. It is the standard product specified by engineers and can be used in a multitude of places including:

Ramps, catwalks, rigs, heavy-duty shelving, stairs, and much more.
Ask a team member if you have any other questions on this material.

POUNDS PER SQ FT	STOCK SIZES	DIAMOND SIZE (W X L)
3.0 LBS	48" X 96"	1.33 X 5.33
3.0 LBS	48" X 120"	1.33 X 5.33
4.0 LBS	48" X 96"	1.33 X 5.33
4.0 LBS	48" X 120"	1.33 X 5.33
5.0 LBS	48" X 96"	1.33 X 5.33
5.0 LBS	48" X 120"	1.33 X 5.33

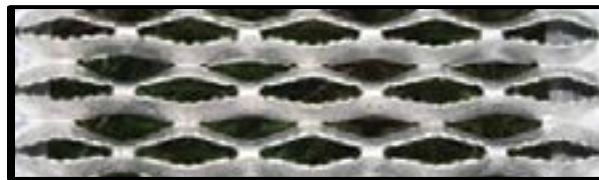


EXAMPLE OF 3.0 LBS EXPANDED METAL GRADING

GRIP STRUT

GRIP STRUT® Plank Grating offers one of the most slip resistant walking-working surfaces in the industry. The surface of the planks have diamond-shaped openings with serrated edges, making them slip resistant in every direction under practically all conditions. Planks are easy to install and have a high strength-to-weight performance that offers a high load capacity and long life. Grip Strut is commonly used for work platforms, catwalks, transportation servicing areas, vehicle steps, rooftop walkways, and stair treads.

GAUGE	WIDTH	HEIGHT	LENGTH
12	4-3/4"	1-1/2" OR 2"	10' OR 12'
12	7"	1-1/2" OR 2"	10' OR 12'
12	9-1/2"	1-1/2" OR 2"	10' OR 12'
12	11-3/4"	1-1/2" OR 2"	10' OR 12'
12	18-3/4"	1-1/2" OR 2"	10' OR 12'
12	24"	1-1/2" OR 2"	10' OR 12'
14	4-3/4"	1-1/2" OR 2"	10' OR 12'
14	7"	1-1/2" OR 2"	10' OR 12'
14	9-1/2"	1-1/2" OR 2"	10' OR 12'
14	11-3/4"	1-1/2" OR 2"	10' OR 12'
14	18-3/4"	1-1/2" OR 2"	10' OR 12'
14	24"	1-1/2" OR 2"	10' OR 12'



EXAMPLE OF GRIT STRUT

PLEASE LET US KNOW IF YOU NEED A SIZE OTHER THAN LISTED ABOVE

PRODUCTS ARE SUBJECT TO AVAILABILITY OR SPECIAL ORDERING

EXPANDED & PERFORATED METAL SHEETS

EXPANDED METAL SHEETS

THICKNESS & OPENING SIZE	SIZE OF SHEET	WEIGHT OF SHEET
1/2" #13	4' X 8'	44 LBS
1/2" #13 (PRE-CUT)	4' X 4'	22 LBS
1/2" #16	4' X 8'	26 LBS
1/2" #16 (PRE-CUT)	4' X 4'	13 LBS
3/4" #13	4' X 8'	24 LBS
3/4" #13 (PRE-CUT)	4' X 4'	12 LBS
3/4" #9	4' X 8'	54 LBS
3/4" #9 (PRE-CUT)	4' X 4'	27 LBS
3/4" #9	4' X 10'	72 LBS
3/4" #9	5' X 10'	85 LBS
3/4" #9 RAISED	4' X 8'	55 LBS
1-1/2" #9	4' X 8'	36 LBS

PERFORATED METAL SHEETS

DIAMETER OF HOLE SIZE	SIZE OF SHEET	WEIGHT OF SHEET
1/16" HOLE	3' X 7'	16 LBS
1/16" HOLE	4' X 7'	22 LBS
1/16" HOLE	4' X 8'	25 LBS
3/32" HOLE	3' X 7'	14 LBS
3/32" HOLE	4' X 7'	18 LBS
3/32" HOLE	4' X 8'	24 LBS

PLEASE LET US KNOW IF YOU NEED A SIZE OTHER THAN LISTED ABOVE

PRODUCTS ARE SUBJECT TO AVAILABILITY OR SPECIAL ORDERING

WIRE MESH & GRATING

Welded wire mesh is constructed from rigid wires welded at every intersection to provide a very stable and uniform surface. By welding rather than weaving, the material holds its shape well without supports, allowing shearing, rolling, and framing to be done with relative ease.

SIZE OF SQUARES		DIMENSIONS	WEIGHT OF SHEET
1"	1MESH	4' X 10' X .125 DIAMETER WIRE	40 LBS
2"	2MESH	4' X 10' X .135 DIAMETER WIRE	24 LBS
3"	3MESH	4' X 10' X .187 DIAMETER WIRE	31 LBS
4"	4MESH	4' X 10' X .250 DIAMETER WIRE	43 LBS



EXAMPLE OF WIRE MESH

CORODECK PANELS

GALVALUME STEEL • 29 GAUGE SHEETS

PART #	DIMENSIONS	WEIGHT OF SHEET
8CORG	26" WIDE X 8 FEET LONG	13.25 LBS
10CORG	26" WIDE X 10 FEET LONG	16.68 LBS
12CORG	26" WIDE X 12 FEET LONG	20.02 LBS



EXAMPLE OF CORRUGATED PANEL

PLEASE LET US KNOW IF YOU NEED A SIZE OTHER THAN LISTED ABOVE

PRODUCTS ARE SUBJECT TO AVAILABILITY OR SPECIAL ORDERING

PANELS, DECKING, PURLINS & MORE

PBR PANELS

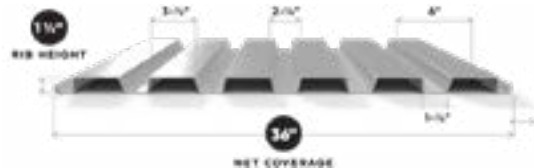
ROOF & SIDING • GALVALUME
26 GAUGE • 36" SPAN



PART #	DIMENSIONS	WEIGHT OF SHEET
26RP-6	36" WIDE X 72" LONG	15.92 LBS
26RP-8	36" WIDE X 96" LONG	20.96 LBS
26RP-8-WHITE	36" WIDE X 96" LONG • WHITE	21.52 LBS
26RP-8-BROWN	36" WIDE X 96" LONG • BROWN	21.52 LBS
26RP-10	36" WIDE X 120" LONG	26.20 LBS
26RP-10-WHITE	36" WIDE X 120" LONG • WHITE	26.89 LBS
26RP-10-BROWN	36" WIDE X 120" LONG • BROWN	26.89 LBS
26RP-12	36" WIDE X 144" LONG	31.44 LBS
26RP-12-WHITE	36" WIDE X 144" LONG • WHITE	32.27 LBS
26RP-12-BROWN	36" WIDE X 144" LONG • BROWN	32.27 LBS
26RP-20	36" WIDE X 240" LONG	52.40 LBS
26RP-20-WHITE	36" WIDE X 240" LONG • WHITE	53.78 LBS
26RP-20-BROWN	36" WIDE X 240" LONG • BROWN	53.78 LBS

B-DECKING PANELS

ROOF & FLOOR DECK • GALVANIZED
20 GAUGE • 36" SPAN



THICKNESS & OPENING SIZE	SIZE OF SHEET	WEIGHT OF SHEET
20HSB36-3X6	3' X 6'	34 LBS
20HSB36-3X8	3' X 8'	45 LBS
20HSB36-3X10	3' X 10'	56.40 LBS
20HSB36-3X12	3' X 12'	135.36 LBS

PLEASE LET US KNOW IF YOU NEED A SIZE OTHER THAN LISTED ABOVE

PRODUCTS ARE SUBJECT TO AVAILABILITY OR SPECIAL ORDERING

PRE-CUT SHEET

COLD ROLLED STEEL	1' X 4'	2' X 4'	4' X 4'
16 GAUGE	10 LBS	20 LBS	40 LBS
18 GAUGE	8 LBS	16 LBS	32 LBS
20 GAUGE	6 LBS	12 LBS	24 LBS
22 GAUGE	5 LBS	10 LBS	20 LBS
24 GAUGE	4 LBS	8 LBS	16 LBS
26 GAUGE	3 LBS	6 LBS	12 LBS
HOT ROLLED STEEL			
11 GAUGE	20 LBS	40 LBS	80 LBS
12 GAUGE	17.50 LBS	35 LBS	70 LBS
14 GAUGE	12.50 LBS	25 LBS	50 LBS
16 GAUGE	10 LBS	20 LBS	40 LBS
GALVANIZED STEEL			
18 GAUGE	8.62 LBS	17.24 LBS	34.48 LBS
20 GAUGE	6.62 LBS	13.24 LBS	26.48 LBS
22 GAUGE	5.62 LBS	11.24 LBS	22.48 LBS
24 GAUGE	4.62 LBS	9.24 LBS	18.48 LBS
TYPE 304 STAINLESS SHEET			
11 GAUGE	21 LBS	42 LBS	84 LBS
16 GAUGE	10.08 LBS	20.16 LBS	40.32 LBS
18 GAUGE	8.06 LBS	16.13 LBS	32.26 LBS
20 GAUGE	6.05 LBS	12.10 LBS	24.20 LBS
22 GAUGE	5.04 LBS	10.08 LBS	20.16 LBS
24 GAUGE	4.03 LBS	8.06 LBS	16.12 LBS
26 GAUGE	3.02 LBS	6.05 LBS	12.10 LBS

	1' X 4'	2' X 4'	4' X 4'
6061 ALUMINUM SHEET			
.063 THICK	3.56 LBS	7.11 LBS	14.22 LBS
.125 THICK	7.06 LBS	14.12 LBS	28.24 LBS
.190 THICK	10.80 LBS	21.60 LBS	43.20 LBS
.250 THICK	14.60 LBS	29.20 LBS	58.40 LBS
5052 ALUMINUM SHEET			
.032 THICK	1.78 LBS	3.56 LBS	7.12 LBS
.040 THICK	2.24 LBS	4.48 LBS	8.96 LBS
.063 THICK	3.52 LBS	7.04 LBS	14.08 LBS
.090 THICK	5.12 LBS	10.24 LBS	20.48 LBS
.125 THICK	6.98 LBS	13.96 LBS	27.92 LBS
.190 THICK	10.63 LBS	21.26 LBS	42.52 LBS
.125 THICK	13.97 LBS	27.94 LBS	55.88 LBS
3003 TREAD-BRITE ALUMINUM			
1/16" THICK	4.04 LBS	8.08 LBS	16.12 LBS
1/8" THICK	7.70 LBS	15.40 LBS	30.80 LBS

WE ALSO CARRY PRE-CUTS IN:

FLAT BAR

1/8" THICK BY 1/2" UP TO 2" • IN 2', 4', & 6' LENGTHS

ANGLE

1/2" X 1/2" X 1/8" (2', 4', & 6') • 3/4" X 3/4" X 1/8" (2', 4', & 6')
 1" X 1" X 1/8" (2', 4', & 6') • 1-1/4" X 1-1/4" X 1/8" (2', 4', & 6')
 1-1/2" X 1-1/2" X 1/8" (2', 4', & 6') • 2" X 2" X 1/8" (2', 4', & 6')

ORNAMENTAL SQUARE TUBE (.060 WALL)

1/2" (2', 4', & 6') • 3/4" (2', 4', & 6') • 1" (2', 4', & 6')
 1-1/4" (2', 4', & 6') • 1-1/2" (2', 4', & 6')

PRE - CUT BASE PLATES

1/8" THICK	3/16" THICK	1/4" THICK	3/8" THICK	7/16" THICK	1/2" THICK	5/8" THICK	3/4" THICK	1" THICK
4" X 4"	4" X 4"	4" X 4"	4" X 4"	4" X 4"				
6" X 6"	6" X 6"	6" X 6"	6" X 6"	6" X 6"	6" X 6"			
8" X 8"	8" X 8"	8" X 8"	8" X 8"	8" X 8"	8" X 8"		8" X 8"	
10" X 10"	10" X 10"	10" X 10"	10" X 10"	10" X 10"	10" X 10"	10" X 10"	10" X 10"	
12" X 12"	12" X 12"	12" X 12"	12" X 12"	12" X 12"	12" X 12"	12" X 12"	12" X 12"	12" X 12"
							14" X 14"	
					18" X 18"		18" X 18"	
								24" X 24"

PLEASE LET US KNOW IF YOU NEED A SIZE OTHER THAN LISTED ABOVE

PRODUCTS ARE SUBJECT TO AVAILABILITY



SECTION II

ALUMINUM

**TREAD BRIGHT • DIAMOND PLATE • SHEET
PLATE • BAR • SHAPES**

COLD ROLL

BAR • SHEET

STAINLESS

BAR • SHEET

D.O.M. TUBING

5052 ALUMINUM



5052 ALUMINUM SHEET

THICKNESS	SIZE OF PLATE	WEIGHT PER SHEET APPROXIMATELY
.032 THICK	48" X 144"	22.60 LBS
	48" X 96"	15.10 LBS
.040 THICK	48" X 144"	28.20 LBS
.050 THICK	48" X 144"	35.00 LBS
.063 THICK	48" X 144"	43.70 LBS
	48" X 120"	36.40 LBS
	48" X 96"	29.20 LBS
.090 THICK	48" X 144"	62.40 LBS
	48" X 96"	41.60 LBS
.125 THICK	48" X 144"	85.90 LBS
	48" X 120"	71.60 LBS
	48" X 96"	57.30 LBS
3/16" THICK	48" X 144"	131.00 LBS
	48" X 96"	87.30 LBS

5052 ALUMINUM PLATE

1/4" THICK	48" X 144"	168.00 LBS
3/8" THICK	48" X 144"	253.92 LBS
1/2" THICK	48" X 144"	335.04 LBS

PLEASE LET US KNOW IF YOU NEED A SIZE OTHER THAN LISTED ABOVE

PRODUCTS ARE SUBJECT TO AVAILABILITY OR SPECIAL ORDERING

6061 ALUMINUM



6061 ALUMINUM SHEET

THICKNESS	SIZE OF PLATE	WEIGHT PER SHEET APPROXIMATELY
.032 THICK	48" X 144"	22.80 LBS
.050 THICK	48" X 144"	35.40 LBS
.063 THICK	48" X 144"	44.20 LBS
.090 THICK	48" X 144"	62.90 LBS
.125 THICK	48" X 144"	86.90 LBS
3/16" THICK	48" X 144"	132.00 LBS

6061 ALUMINUM PLATE

1/4" THICK	48" X 144"	169.00 LBS
3/8" THICK	48" X 144"	254.00 LBS
1/2" THICK	48" X 144"	339.00 LBS
3/4" THICK	48" X 144"	509.00 LBS
1" THICK	48" X 144"	677.00 LBS
1-1/2" THICK	48" X 144"	1018.00 LBS
2" THICK	48" X 144"	1354.00 LBS

WE ALSO CARRY 6063 ARCHITECTURAL ALUMINUM

EXTRUDABLE, WITH GREAT CORROSION RESISTANCE AND GOOD SURFACE QUALITY

ANGLE & CHANNEL SIZES AVAILABLE IN 16' LENGTHS

TUBING (ROUND, SQUARE, RECTANGULAR) AVAILABLE IN 16' AND/OR 24' LENGTHS

PLEASE CHECK WITH YOUR SALES ASSOCIATE FOR AVAILABLE SIZES & MORE INFORMATION ON OUR ALUMINUM OFFERINGS

PLEASE LET US KNOW IF YOU NEED A SIZE OTHER THAN LISTED ABOVE

PRODUCTS ARE SUBJECT TO AVAILABILITY OR SPECIAL ORDERING

3003 TREAD-BRITE



3003 ALUMINUM DIAMOND TREAD PLATE

<u>THICKNESS</u>	<u>SIZE OF PLATE</u>	<u>WEIGHT PER SHEET APPROXIMATELY</u>
1/16" THICK	4' X 16' • (48" X 192") • ALSO COMES IN 4' X 8' (48" X 96") SHEETS	64.33 LBS
1/8" THICK	4' X 16' • (48" X 192") • ALSO COMES IN 4' X 8' (48" X 96") SHEETS	123.00 LBS
3/16" THICK	4' X 16' • (48" X 192") • ALSO COMES IN 4' X 8' (48" X 96") SHEETS	192.00 LBS

6061 ALUM. DIAMOND PLATE



<u>THICKNESS</u>	<u>SIZE OF PLATE</u>	<u>WEIGHT PER SHEET APPROXIMATELY</u>
1/8" THICK	4' X 16' • (48" X 192")	122.00 LBS
3/16" THICK	4' X 16' • (48" X 192")	179.00 LBS

PLEASE LET US KNOW IF YOU NEED A SIZE OTHER THAN LISTED ABOVE

PRODUCTS ARE SUBJECT TO AVAILABILITY OR SPECIAL ORDERING

ALUMINUM TUBING



ALUMINUM SQUARE TUBE

DIMENSIONS					LBS/FT	LBS/LENGTH
3/4	X	3/4	X	.065	0.208	4.16
			X	.125	0.374	8.98
1	X	1	X	.065	0.280	5.60
			X	.125	0.525	10.50
1-1/4	X	1-1/4	X	.125	0.676	13.52
1-1/2	X	1-1/2	X	.065	0.428	8.56
			X	.125	0.826	16.52
2	X	2	X	.065	0.580	11.60
			X	.125	1.126	22.52

ALUMINUM RECTANGULAR TUBE

1/2	X	1	X	.065	0.250	6.00
			X	.125	0.380	7.60
1	X	2	X	.065	0.428	8.56
			X	.125	0.824	16.48
1	X	3	X	.125	1.126	22.52
1-1/2	X	2	X	.125	0.974	19.48
1-1/2	X	3	X	.125	1.275	25.50
2	X	3	X	.125	1.426	28.52
2	X	4	X	.125	1.726	34.52

ALUMINUM ROUND TUBE

1/2	X	.065	.105	2.10
5/8	X	.065	.135	2.70
3/4	X	.065	.165	3.30
1	X	.065	.225	4.50
	X	.125	.404	8.08
1-1/4	X	.065	.288	5.76
	X	.125	.530	10.60
1-1/2	X	.065	.345	6.90
	X	.125	.648	12.96
	X	.188	.911	18.22
2	X	.065	.465	9.30
	X	.125	.883	17.66

PATTON'S TYPICALLY STOCKS INDUSTRY STANDARD SIZES & LENGTHS, WHICH MAY VARY DEPENDING ON MATERIAL WEIGHT PER FOOT CAN RANGE, DEPENDING ON MILL SPECS AND/OR STANDARDS
PLEASE LET US KNOW IF YOU NEED A SIZE OTHER THAN LISTED ABOVE

PRODUCTS ARE SUBJECT TO AVAILABILITY OR SPECIAL ORDERING

ALUMINUM PIPE



ALUMINUM PIPE

DIMENSIONS		LBS/FT	LBS/LENGTH
1/2" PIPE	SCHEDULE 40	0.300	6.00
3/4" PIPE	SCHEDULE 40	0.391	7.82
1" PIPE	SCHEDULE 40	0.581	11.62
1-1/4" PIPE	SCHEDULE 40	0.786	15.72
1-1/2" PIPE	SCHEDULE 40	0.959	19.18
2" PIPE	SCHEDULE 40	1.289	25.78

ALUMINUM CHANNEL



ALUMINUM CHANNEL

DIMENSIONS					LBS/FT	LBS/LENGTH
1/2	X	1	X	1/8	.262	6.55
1	X	1	X	1/8	.413	10.325
1-1/2	X	1-1/2	X	1/8	.638	15.95
1	X	2	X	1/8	.577	14.425
3	X	1.41	X	.170	1.45	36.25
3	X	1.75	X	.170	1.63	40.75
4	X	1.58	X	.180	1.88	47.00
5	X	1.75	X	.190	2.38	59.50
6	X	1.92	X	.200	2.89	72.25

PATTON'S TYPICALLY STOCKS INDUSTRY STANDARD SIZES & LENGTHS, WHICH MAY VARY DEPENDING ON MATERIAL WEIGHT PER FOOT CAN RANGE, DEPENDING ON MILL SPECS AND/OR STANDARDS
PLEASE LET US KNOW IF YOU NEED A SIZE OTHER THAN LISTED ABOVE

PRODUCTS ARE SUBJECT TO AVAILABILITY OR SPECIAL ORDERING

ALUMINUM ANGLE



6061 ALUMINUM ANGLE • EQUAL LEGS

DIMENSIONS					LBS/FT	LBS/LENGTH (25')
3/4	X	3/4	X	1/8	.201	5.03
1	X	1	X	1/8	.275	6.88
			X	3/16	.400	10.00
			X	1/4	.514	12.85
1-1/4	X	1-1/4	X	1/8	.343	8.58
			X	3/16	.510	12.75
			X	1/4	.656	16.40
1-1/2	X	1-1/2	X	1/8	.423	10.58
			X	3/16	.619	15.48
			X	1/4	.809	20.23
1-3/4	X	1-3/4	X	1/4	.956	23.90
2	X	2	X	1/8	.577	14.43
			X	3/16	.850	21.25
			X	1/4	1.11	27.75
2-1/2	X	2-1/2	X	1/8	.724	18.10
			X	3/16	1.07	26.75
			X	1/4	1.40	35.10
			X	3/8	2.05	51.18
3	X	3	X	3/16	1.28	31.88
			X	1/4	1.68	42.10
			X	5/16	2.08	52.05
			X	3/8	2.47	61.85
4	X	4	X	1/4	2.283	57.08
			X	3/8	3.366	84.15
6	X	6	X	3/8	5.119	127.98

6061 ALUMINUM ANGLE • UNEQUAL LEGS

1	X	2	X	1/8	.418	10.45
1-1/2	X	2	X	1/8	.510	12.75
			X	3/16	.744	18.60
2	X	3	X	3/16	1.08	27.00
			X	1/4	1.43	35.75
			X	3/8	2.07	51.75
3	X	4	X	1/4	2.03	50.75

PATTON'S TYPICALLY STOCKS INDUSTRY STANDARD SIZES & LENGTHS, WHICH MAY VARY DEPENDING ON MATERIAL WEIGHT PER FOOT CAN RANGE, DEPENDING ON MILL SPECS AND/OR STANDARDS
PLEASE LET US KNOW IF YOU NEED A SIZE OTHER THAN LISTED ABOVE

PRODUCTS ARE SUBJECT TO AVAILABILITY OR SPECIAL ORDERING

ALUMINUM FLAT BAR



6061 • T6 ALUMINUM FLAT BAR

DIMENSIONS			LBS/FT	LBS/LENGTH (12')
1/8	X	1/2	.075	0.90
	X	3/4	.113	1.34
	X	1	.150	1.80
	X	1-1/4	.187	2.24
	X	1-1/2	.226	2.71
	X	2	.300	3.60
	X	2-1/2	.376	4.51
	X	3	.450	5.40
	X	4	.600	7.20
3/16	X	1/2	.113	1.36
	X	3/4	.169	2.03
	X	1	.226	2.71
	X	1-1/4	.282	3.38
	X	1-1/2	.338	4.05
	X	2	.451	5.41
	X	2-1/2	.560	6.72
	X	3	.667	8.12
	X	4	.902	10.82
1/4	X	1/2	.147	1.80
	X	3/4	.224	2.68
	X	1	.300	3.60
	X	1-1/4	.374	4.50
	X	1-1/2	.450	5.40
	X	1-3/4	.526	6.31
	X	2	.600	7.20
	X	2-1/2	.750	9.00
	X	3	.900	10.80
	X	4	1.20	14.40
	X	5	1.49	17.95
	X	6	1.80	21.60
	X	12	3.60	43.00
5/16	X	1	.374	4.49
	X	2	.749	8.99
	X	3	1.10	13.21
3/8	X	1/2	.225	2.70
	X	3/4	.337	4.04
	X	1	.450	5.40
	X	1-1/4	.561	6.77
	X	1-1/2	.676	8.11
	X	2	.900	10.80
	X	2-1/2	1.12	13.51
	X	3	1.35	16.20
	X	4	1.80	21.60
X	6	2.70	32.40	

PATTON'S TYPICALLY STOCKS INDUSTRY STANDARD SIZES & LENGTHS, WHICH MAY VARY DEPENDING ON MATERIAL WEIGHT PER FOOT CAN RANGE, DEPENDING ON MILL SPECS AND/OR STANDARDS

PLEASE LET US KNOW IF YOU NEED A SIZE OTHER THAN LISTED ABOVE

PRODUCTS ARE SUBJECT TO AVAILABILITY OR SPECIAL ORDERING

ALUMINUM FLAT BAR



6061 • T6 ALUMINUM FLAT BAR

DIMENSIONS			LBS/FT	LBS/LENGTH (12')
1/2	X	5/8	.374	4.49
	X	3/4	.450	5.40
	X	1	.600	7.20
	X	1-1/4	.750	9.00
	X	1-1/2	.900	10.80
	X	1-3/4	1.05	12.60
	X	2	1.20	14.40
	X	2-1/2	1.50	18.00
	X	3	1.80	21.60
	X	3-1/2	2.10	25.20
	X	4	2.40	28.80
	X	5	3.00	35.98
	X	6	3.60	42.20
X	8	4.80	57.60	
5/8	X	3/4	.583	6.99
	X	1	.750	9.00
	X	1-1/2	1.12	13.49
	X	2	1.50	18.00
	X	2-1/2	1.87	22.50
	X	3	2.25	27.00
	X	4	3.00	36.00
3/4	X	1	.900	10.80
	X	1-1/2	1.35	16.20
	X	2	1.80	21.60
	X	2-1/2	2.25	27.00
	X	3	2.70	32.40
	X	4	3.60	43.20
	X	6	5.70	64.80
	X	8	7.20	86.40
1	X	1-1/2	1.80	21.60
	X	2	2.40	28.80
	X	3	3.60	43.20
	X	4	4.80	56.70
	X	5	6.00	72.00
	X	6	7.20	86.40
	X	8	9.41	115.20

PATTON'S TYPICALLY STOCKS INDUSTRY STANDARD SIZES & LENGTHS, WHICH MAY VARY DEPENDING ON MATERIAL WEIGHT PER FOOT CAN RANGE, DEPENDING ON MILL SPECS AND/OR STANDARDS
PLEASE LET US KNOW IF YOU NEED A SIZE OTHER THAN LISTED ABOVE

PRODUCTS ARE SUBJECT TO AVAILABILITY OR SPECIAL ORDERING

ALUMINUM SQUARE BAR



6061 ALUMINUM SQUARE BAR

DIMENSIONS	LBS/FT	LBS/LENGTH (12')
1/4" SQUARE	0.074	0.888
3/8" SQUARE	0.169	2.028
1/2" SQUARE	0.300	3.600
5/8" SQUARE	0.473	5.676
3/4" SQUARE	0.676	8.112
7/8" SQUARE	0.928	11.136
1" SQUARE	1.200	14.400
1-1/4" SQUARE	1.874	22.488
1-1/2" SQUARE	2.700	32.400
1-3/4" SQUARE	3.676	44.112
2" SQUARE	4.798	57.576

ALUMINUM ROUND BAR



6061 ALUMINUM ROUND BAR

DIMENSIONS	LBS/FT	LBS/LENGTH (12')
1/8" ROUND	0.014	0.168
3/16" ROUND	0.032	0.384
1/4" ROUND	0.058	0.696
5/16" ROUND	0.093	1.116
3/8" ROUND	0.132	1.584
1/2" ROUND	0.235	2.820
5/8" ROUND	0.368	4.416
3/4" ROUND	0.530	6.360
7/8" ROUND	0.722	8.482
1" ROUND	0.942	11.078
1-1/8" ROUND	1.193	14.316
1-3/16" ROUND	1.330	15.960
1-1/4" ROUND	1.473	17.676
1-3/8" ROUND	1.782	21.384
1-1/2" ROUND	2.121	25.452
1-5/8" ROUND	2.489	29.868
1-3/4" ROUND	2.886	33.926
1-7/8" ROUND	3.313	39.756
2" ROUND	3.770	45.240
2-1/2" ROUND	5.891	70.692

PATTON'S TYPICALLY STOCKS INDUSTRY STANDARD SIZES & LENGTHS, WHICH MAY VARY DEPENDING ON MATERIAL WEIGHT PER FOOT CAN RANGE, DEPENDING ON MILL SPECS AND/OR STANDARDS

PLEASE LET US KNOW IF YOU NEED A SIZE OTHER THAN LISTED ABOVE

PRODUCTS ARE SUBJECT TO AVAILABILITY OR SPECIAL ORDERING

COLD ROLL FLAT BAR



1018 COLD ROLL FLAT BAR

DIMENSIONS			LBS/FT	LBS/LENGTH (12')
1/8"	X	1/2"	.2137	2.552
	X	3/4"	.3191	3.829
	X	1"	.4254	5.105
	X	1-1/4"	.5318	6.381
	X	1-3/8"	.5849	7.019
	X	1-1/2"	.6381	7.657
	X	1-3/4"	.7445	8.933
	X	2"	.8508	10.21
	X	2-1/2"	1.064	12.76
	X	3"	1.276	15.31
	X	3-1/2"	1.489	17.87
	X	4"	1.702	20.42
	X	6"	2.552	30.63
3/16"	X	1/2"	.3191	3.829
	X	5/8"	.3988	4.786
	X	3/4"	.4786	5.743
	X	1"	.6381	7.657
	X	1-1/4"	.7976	9.572
	X	1-1/2"	.9572	11.49
	X	1-3/4"	1.117	13.40
	X	2"	1.276	15.31
	X	2-1/2"	1.595	19.14
	X	3"	1.914	22.97
	X	4"	2.552	30.63
1/4"	X	3/8"	.3191	3.833
	X	1/2"	.4254	5.105
	X	5/8"	.5318	6.381
	X	3/4"	.6381	7.657
	X	1"	.8508	10.21
	X	1-1/4"	1.064	12.76
	X	1-1/2"	1.276	15.31
	X	1-3/4"	1.489	17.87
	X	2"	1.702	20.42
	X	2-1/2"	2.127	25.52
	X	3"	2.552	30.63
	X	4"	3.403	40.84
	5/16"	X	1"	1.064
X		1-1/4"	1.329	15.95
X		1-1/2"	1.595	19.14
X		2"	2.127	25.52
X		4"	4.254	51.05

PATTON'S TYPICALLY STOCKS INDUSTRY STANDARD SIZES & LENGTHS, WHICH MAY VARY DEPENDING ON MATERIAL WEIGHT PER FOOT CAN RANGE, DEPENDING ON MILL SPECS AND/OR STANDARDS
PLEASE LET US KNOW IF YOU NEED A SIZE OTHER THAN LISTED ABOVE

PRODUCTS ARE SUBJECT TO AVAILABILITY OR SPECIAL ORDERING

COLD ROLL FLAT BAR



1018 COLD ROLL FLAT BAR

DIMENSIONS			LBS/FT	LBS/LENGTH (12')	
3/8"	X	1/2"	.6381	7.657	
	X	3/4"	.9572	11.49	
	X	1"	1.276	15.31	
	X	1-1/4"	1.595	19.17	
	X	1-1/2"	1.914	22.97	
	X	1-3/4"	2.233	26.80	
	X	2"	2.552	30.63	
	X	2-1/4"	2.871	34.46	
	X	2-1/2"	3.191	38.29	
	X	3"	3.829	45.94	
	X	4"	5.105	61.26	
	1/2"	X	5/8"	1.064	12.76
X		3/4"	1.276	15.31	
X		1"	1.702	20.42	
X		1-1/4"	2.127	25.52	
X		1-1/2"	2.552	30.63	
X		1-3/4"	2.978	35.73	
X		2"	3.403	40.84	
X		2-1/2"	4.254	51.05	
X		3"	5.105	61.26	
X		4"	6.806	81.68	
5/8"		X	1"	2.127	25.52
		X	1-1/2"	3.191	38.29
	X	2"	4.254	51.05	
3/4"	X	1"	2.552	30.63	
	X	1-1/2"	3.829	45.94	
	X	2"	5.105	61.26	
1"	X	1-1/4"	4.254	51.05	
	X	1-1/2"	5.105	61.26	
	X	1-3/4"	5.956	71.47	
	X	2"	6.806	81.68	
	X	2-1/2"	8.508	102.16	
	X	3"	10.21	122.52	
	X	4"	13.61	163.42	

PATTON'S TYPICALLY STOCKS INDUSTRY STANDARD SIZES & LENGTHS, WHICH MAY VARY DEPENDING ON MATERIAL WEIGHT PER FOOT CAN RANGE, DEPENDING ON MILL SPECS AND/OR STANDARDS
PLEASE LET US KNOW IF YOU NEED A SIZE OTHER THAN LISTED ABOVE

PRODUCTS ARE SUBJECT TO AVAILABILITY OR SPECIAL ORDERING

COLD ROLL SQUARE BAR



1018 COLD ROLL SQUARE BAR

DIMENSIONS	LBS/FT	LBS/LENGTH (12')
1/8" SQUARE	.0531	.6381
3/16" SQUARE	.1196	1.436
1/4" SQUARE	.2127	2.552
5/16" SQUARE	.3323	3.988
3/8" SQUARE	.4786	5.743
7/16" SQUARE	.6514	7.817
1/2" SQUARE	.8508	10.21
9/16" SQUARE	1.077	12.92
5/8" SQUARE	1.329	15.95
11/16" SQUARE	1.609	19.30
3/4" SQUARE	1.914	22.97
13/16" SQUARE	2.247	26.96
7/8" SQUARE	2.606	31.27
15/16" SQUARE	2.991	35.89
1" SQUARE	3.403	40.84
1-1/16" SQUARE	3.842	46.10
1-1/8" SQUARE	4.307	51.69
1-3/16" SQUARE	4.799	57.59
1-1/4" SQUARE	5.318	63.81
1-3/8" SQUARE	6.434	77.21
1-1/2" SQUARE	7.657	91.89
1-5/8" SQUARE	8.987	107.8
1-3/4" SQUARE	10.42	125.1
2" SQUARE	13.61	163.4
2-1/2" SQUARE	21.27	255.2
3" SQUARE	30.63	367.5
4" SQUARE	54.45	653.4

PATTON'S TYPICALLY STOCKS INDUSTRY STANDARD SIZES & LENGTHS, WHICH MAY VARY DEPENDING ON MATERIAL WEIGHT PER FOOT CAN RANGE, DEPENDING ON MILL SPECS AND/OR STANDARDS
PLEASE LET US KNOW IF YOU NEED A SIZE OTHER THAN LISTED ABOVE

PRODUCTS ARE SUBJECT TO AVAILABILITY OR SPECIAL ORDERING

COLD ROLL ROUND BAR



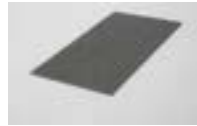
1018 COLD ROLL ROUND BAR

DIMENSIONS	LBS/FT	LBS/LENGTH
1/8" ROUND	.0418	0.504 (12')
3/16" ROUND	.0940	1.128 (12')
1/4" ROUND	.1671	2.004 OR 3.340 (20')
5/16" ROUND	.2610	5.220
3/8" ROUND	.3759	7.517
7/16" ROUND	.5116	10.23
1/2" ROUND	.6682	13.36
9/16" ROUND	.8457	16.91
5/8" ROUND	1.044	20.88
11/16" ROUND	1.263	25.27
3/4" ROUND	1.504	30.07
13/16" ROUND	1.765	35.29
7/8" ROUND	2.046	40.93
1" ROUND	2.673	53.46
1-1/16" ROUND	3.017	60.35
1-1/8" ROUND	3.383	67.66
1-1/4" ROUND	4.176	83.53
1-3/8" ROUND	5.053	101.1
1-1/2" ROUND	6.008	120.3
1-5/8" ROUND	7.058	141.2
1-3/4" ROUND	8.186	163.7
2" ROUND	10.69	213.8

PATTON'S TYPICALLY STOCKS INDUSTRY STANDARD SIZES & LENGTHS, WHICH MAY VARY DEPENDING ON MATERIAL
WEIGHT PER FOOT CAN RANGE, DEPENDING ON MILL SPECS AND/OR STANDARDS
PLEASE LET US KNOW IF YOU NEED A SIZE OTHER THAN LISTED ABOVE

PRODUCTS ARE SUBJECT TO AVAILABILITY OR SPECIAL ORDERING

304 • 2B STAINLESS STEEL SHEET



TYPE 304 • FINISH # 2B

THICKNESS	SIZE OF PLATE			LBS/SQ FT	LBS/SHEET
7 GAUGE	48"	X	120"	7.870	314.800
10 GAUGE	48"	X	120"	5.670	226.800
11 GAUGE	48"	X	120"	5.040	201.600
12 GAUGE	48"	X	120"	4.410	176.400
13 GAUGE	48"	X	120"	3.780	151.200
14 GAUGE	48"	X	120"	3.156	126.240
16 GAUGE	48"	X	120"	2.531	101.240
18 GAUGE	48"	X	120"	2.031	81.240
20 GAUGE	48"	X	120"	1.525	61.000
22 GAUGE	48"	X	120"	1.260	50.400
24 GAUGE	48"	X	120"	0.756	30.240

**WE SUPPLY STAINLESS STEEL GRADES 303, 304, 316 & 17-4,
AS WELL AS 304 & 316 PLATE IN 3/16" - 3/4" THICK**

THESE MATERIALS ARE USUALLY SPECIAL ORDER, SO PLEASE ALLOW FOR ADDED PROCESSING
TIME WHEN YOU ORDER OR GET A QUOTE ON THOSE ITEMS

*PLEASE CHECK WITH YOUR SALES ASSOCIATE FOR AVAILABLE SIZES & MORE INFORMATION ON OUR
STAINLESS STEEL OFFERINGS*

WE ALSO CARRY PRE-CUTS... CHECK PAGE 40 FOR OUR SELECTION

PLEASE LET US KNOW IF YOU NEED A SIZE OTHER THAN LISTED ABOVE

PRODUCTS ARE SUBJECT TO AVAILABILITY OR SPECIAL ORDERING

STAINLESS STEEL FLAT BAR



TYPE 304 • FINISH # 2B FLAT BAR

DIMENSIONS			LBS/FT	LBS/LENGTH	
1/8"	X	1/2"	0.213	RANDOM	
	X	3/4"	0.319	RANDOM	
	X	1"	0.425	RANDOM	
	X	1-1/4"	0.532	RANDOM	
	X	1-1/2"	0.638	RANDOM	
	X	2"	0.851	RANDOM	
	X	2-1/2"	1.064	RANDOM	
	X	3"	1.276	RANDOM	
	X	4"	1.700	RANDOM	
	X	5"	2.170	RANDOM	
	X	6"	2.610	RANDOM	
3/16"	X	1/2"	0.319	RANDOM	
	X	3/4"	0.479	RANDOM	
	X	1"	0.638	RANDOM	
	X	1-1/4"	0.798	RANDOM	
	X	1-1/2"	0.957	RANDOM	
	X	2"	1.276	RANDOM	
	X	2-1/2"	1.595	RANDOM	
	X	3"	1.914	RANDOM	
	X	4"	2.552	RANDOM	
	X	6"	3.829	RANDOM	
	1/4"	X	1/2"	0.425	RANDOM
X		3/4"	0.638	RANDOM	
X		1"	0.851	RANDOM	
X		1-1/4"	1.064	RANDOM	
X		1-1/2"	1.276	RANDOM	
X		2"	1.702	RANDOM	
X		2-1/2"	2.127	RANDOM	
X		3"	2.552	RANDOM	
X		4"	3.403	RANDOM	
3/8"		X	1/2"	0.638	RANDOM
		X	3/4"	0.957	RANDOM
	X	1"	1.276	RANDOM	
	X	1-1/2"	1.914	RANDOM	
	X	2"	2.552	RANDOM	
	X	3"	3.829	RANDOM	
	X	4"	5.105	RANDOM	
	X	6"	7.657	RANDOM	
1/2"	X	3/4"	1.276	RANDOM	
	X	1"	1.702	RANDOM	
	X	1-1/4"	2.127	RANDOM	
	X	1-1/2"	2.552	RANDOM	
	X	2"	3.403	RANDOM	
	X	4"	6.806	RANDOM	
	X	6"	10.21	RANDOM	

PLEASE NOTE: THIS MATERIAL COMES IN RANDOM LENGTHS,
TYPICALLY BETWEEN 10 AND 13 FEET

PLEASE LET US KNOW IF YOU NEED A SIZE OTHER THAN LISTED ABOVE

PRODUCTS ARE SUBJECT TO AVAILABILITY OR SPECIAL ORDERING

D.O.M ROUND TUBE



DRAWN OVER MANDREL TUBE

DIMENSIONS			LBS/FT	LBS/LENGTH
5/8"	X	.120	0.647	RANDOM
3/4"	X	.120	0.807	RANDOM
1"	X	.120	1.128	RANDOM
	X	.188	1.630	RANDOM
1-1/4"	X	.090	1.172	RANDOM
	X	.120		
	X	.250	2.670	RANDOM
1-1/2"	X	.090	1.426	RANDOM
	X	.120	1.769	RANDOM
	X	.188	2.635	RANDOM
1-5/8"	X	.120	1.930	RANDOM
1-3/4"	X	.090	1.679	RANDOM
	X	.120	2.089	RANDOM
2"	X	.090	1.933	RANDOM
	X	.120	2.409	RANDOM

PLEASE NOTE: THIS MATERIAL COMES IN "RANDOM" LENGTHS
USUALLY BETWEEN 17 FEET UP TO 24 FEET • SOLD IN FULL LENGTHS ONLY

CHROMOLY ROUND TUBE



CHROMOLY 4130 TUBE

DIMENSIONS			LBS/FT	LBS/LENGTH
1"	X	.095	.9194	16.5492
1-1/4"	X	.095	1.173	21.114
	X	.120	1.451	26.118
1-1/2"	X	.120	1.771	31.878
1-3/4"	X	.095	1.680	30.240
	X	.120	2.093	37.674
2"	X	.120	2.412	43.416

PLEASE NOTE: THIS MATERIAL COMES IN RANDOM LENGTHS,
TYPICALLY BETWEEN 17 FEET AND UP TO 24 FEET • SOLD IN FULL LENGTHS ONLY

PLEASE LET US KNOW IF YOU NEED A SIZE OTHER THAN LISTED ABOVE

PRODUCTS ARE SUBJECT TO AVAILABILITY OR SPECIAL ORDERING



STOCK LIST & BUYER'S GUIDE

STEEL • PIPE • ALUMINUM • SHAPES • ORNAMENTAL

ONTARIO

558 E CALIFORNIA ST
ONTARIO, CA 91761

909.988.6461

HOURS M-F 7:30 AM - 5 PM
SAT 8 AM - 12 PM

ONTARIO@PATTONSCORP.COM

SAN BERNARDINO

1010 S ARROWHEAD AVE
SAN BERNARDINO, CA 92408

909.884.8771

HOURS M-F 7:30 AM - 5 PM
SAT 8 AM - 12 PM

SANBERNARDINO@PATTONSCORP.COM

PALMDALE

630 ST ANDREWS WAY
PALMDALE, CA 93551

661.942.2755

HOURS M-F 7:30 AM - 5 PM
SAT 8 AM - 12 PM

PALMDALE@PATTONSCORP.COM

HESPERIA

17205 EUCALYPTUS ST, UNIT C-11
HESPERIA, CA 92345

760.956.6446

HOURS M-F 7:30 AM - 4:30 PM
SAT 8 AM - 12 PM

HESPERIA@PATTONSCORP.COM

COMPTON

12925 ALAMEDA ST
COMPTON, CA 90222

323.430.9900

HOURS M-F 7 AM - 3:30 PM
SAT 8 AM - 12 PM

COMPTON@PATTONSCORP.COM

IRWINDALE

15563 E ARROW HWY
IRWINDALE, CA 91706

626.338.8110

HOURS M-F 7:30 AM - 5 PM
SAT 8 AM - 12 PM

IRWINDALE@PATTONSCORP.COM

BURBANK

2801 N SAN FERNANDO BLVD
BURBANK, CA 91504

818.846.3446

HOURS M-F 7 AM - 5 PM
SAT 8 AM - 12 PM

BURBANK@PATTONSCORP.COM

AMAZING CUSTOMER SERVICE & PRICING • WE WELCOME WALK-INS • OPEN TO THE PUBLIC

**SELECTION, AVAILABILITY, STRENGTH & RELIABILITY...
WHEN YOU NEED IT. ONLY AT PATTON'S • SINCE 1959**

VISIT ONLINE FOR ONE HOUR QUOTES @ WWW.STEELQUOTES.PATTONSCORP.COM

Our SEVEN WALK-IN locations allow for immediate will-call services and in-stock materials. Our next day delivery services are second to none and available on almost any order placed in-store, via e-mail or over the phone.

Patton's delivers your material requests from over three million pounds of stocked in-house inventory in our 65,000 square foot distribution center in Ontario, California. Our stock includes an extensive selection of hot and cold rolled steel, carbon steel, galvanized materials, aluminum, stainless and much more...